

STR # 62749 / Created March 16, 2024



# Monthly STAR Report : Sleep Inn & Suites Hennessey North

For the Month of: February 2024

Currency: US Dollar / Competitive Set Data Excludes Subject Property

Table Of Contents	1
Monthly Performance at a Glance	2
STAR Summary	3
Competitive Set Report	4
Response Report	5
Day of Week & Weekday/Weekend	6
Daily Data for the Month	7
Help	8

Corporate North American Headquarters  
T: +1 (615) 824 8664  
support@str.com www.str.com

International Headquarters  
T: +44 (0) 207 922 1930  
hotelinfo@str.com www.str.com

2024 © CoStar Group. This STR Report is a publication of STR, LLC and STR Global, Ltd., CoStar Group companies, and is intended solely for use by paid subscribers. The information in the STR Report is provided on an "as is" and "as available" basis and should not be construed as investment, tax, accounting or legal advice. Reproduction or distribution of this STR Report, in whole or part, without written permission is prohibited and subject to legal action. If you have received this report and are NOT a subscriber to this STR Report, please contact us immediately. Source: 2024 STR, LLC / STR Global, Ltd. trading as "STR".

## Tab 2 - Monthly Performance at a Glance - My Property vs. Competitive Set

Sleep Inn & Suites Hennessey North 522 N Main St Hennessey, OK 73742-1019 Phone: (405) 853-2126

STR # 62749 ChainID: OK223 MgtCo: None Owner: None

For the Month of: February 2024 Date Created: March 16, 2024 Monthly Competitive Set Data Excludes Subject Property

### February 2024

	Occupancy (%)			ADR			RevPAR		
	My Prop	Comp Set	Index (MPI)	My Prop	Comp Set	Index (ARI)	My Prop	Comp Set	Index (RGI)
Current Month	26.2	52.0	50.4	64.04	74.62	85.8	16.78	38.79	43.3
Year To Date	25.8	47.9	53.9	62.25	74.80	83.2	16.08	35.85	44.9
Running 3 Month	26.5	47.9	55.4	60.68	75.81	80.0	16.08	36.30	44.3
Running 12 Month	38.9	54.4	71.5	62.70	82.21	76.3	24.38	44.71	54.5

### February 2024 vs. 2023 Percent Change (%)

	Occupancy			ADR			RevPAR		
	My Prop	Comp Set	Index (MPI)	My Prop	Comp Set	Index (ARI)	My Prop	Comp Set	Index (RGI)
Current Month	-61.8	10.6	-65.5	-4.3	-13.1	10.2	-63.5	-3.9	-62.0
Year To Date	-52.7	7.1	-55.8	-7.8	-13.9	7.1	-56.4	-7.8	-52.7
Running 3 Month	-44.2	9.3	-49.0	-10.3	-12.4	2.4	-50.0	-4.3	-47.7
Running 12 Month	-29.4	1.7	-30.6	-13.0	-4.0	-9.4	-38.6	-2.4	-37.1

# Tab 3 - STAR Summary - My Property vs. Comp Set and Industry Segments

Sleep Inn & Suites Hennessey North 522 N Main St Hennessey, OK 73742-1019 Phone: (405) 853-2126

STR # 62749 ChainID: OK223 MgtCo: None Owner: None

For the Month of: February 2024 Date Created: March 16, 2024 Monthly Competitive Set Data Excludes Subject Property

Occupancy (%)								
Current Month	% Chg	Year to Date	% Chg	Running 3 Month	% Chg	Running 12 Month	% Chg	
Sleep Inn & Suites Hennessey North	26.2	-61.8	25.8	-52.7	26.5	-44.2	38.9	-29.4
Market: Oklahoma Area	45.0	-2.5	41.5	-6.8	40.9	-6.1	49.1	-3.9
Market Class: Midscale Class	47.9	-6.6	43.6	-8.8	42.6	-8.6	52.3	-2.9
Submarket: Oklahoma West Area	43.9	1.2	40.2	-3.9	39.6	-4.0	47.1	-1.9
Submarket Scale: Midscale Chains	53.7	0.4	49.3	-5.2	48.4	-5.4	58.4	-1.8
Competitive Set: Competitors	52.0	10.6	47.9	7.1	47.9	9.3	54.4	1.7

Supply			
Month % Chg	YTD % Chg	Run 3 Mon % Chg	Run 12 Mon % Chg
3.6	1.7	1.1	-0.3
0.1	0.2	0.2	-0.7
4.4	4.4	4.4	1.8
-1.5	-1.0	-1.2	-1.0
0.0	0.0	0.0	0.6
0.0	0.0	0.0	0.0

Sleep Inn & Suites Hennessey North
Market: Oklahoma Area
Market Class: Midscale Class
Submarket: Oklahoma West Area
Submarket Scale: Midscale Chains
Competitive Set: Competitors

Average Daily Rate								
Current Month	% Chg	Year to Date	% Chg	Running 3 Month	% Chg	Running 12 Month	% Chg	
Sleep Inn & Suites Hennessey North	64.04	-4.3	62.25	-7.8	60.68	-10.3	62.70	-13.0
Market: Oklahoma Area	81.59	1.5	80.56	1.0	80.42	1.2	85.21	3.3
Market Class: Midscale Class	78.58	-1.2	77.71	-1.5	78.35	-0.6	82.12	2.1
Submarket: Oklahoma West Area	78.59	2.5	77.82	1.7	77.22	1.3	80.41	3.0
Submarket Scale: Midscale Chains	93.13	2.5	92.69	2.4	92.10	1.7	95.30	2.5
Competitive Set: Competitors	74.62	-13.1	74.80	-13.9	75.81	-12.4	82.21	-4.0

Demand			
Month % Chg	YTD % Chg	Run 3 Mon % Chg	Run 12 Mon % Chg
-60.5	-51.9	-43.6	-29.6
-2.5	-6.6	-5.9	-4.6
-2.5	-4.8	-4.6	-1.1
-0.4	-4.9	-5.1	-2.9
0.4	-5.2	-5.4	-1.2
10.6	7.1	9.3	1.7

Sleep Inn & Suites Hennessey North
Market: Oklahoma Area
Market Class: Midscale Class
Submarket: Oklahoma West Area
Submarket Scale: Midscale Chains
Competitive Set: Competitors

RevPAR								
Current Month	% Chg	Year to Date	% Chg	Running 3 Month	% Chg	Running 12 Month	% Chg	
Sleep Inn & Suites Hennessey North	16.78	-63.5	16.08	-56.4	16.08	-50.0	24.38	-38.6
Market: Oklahoma Area	36.75	-1.0	33.42	-6.0	32.90	-5.0	41.82	-0.7
Market Class: Midscale Class	37.65	-7.8	33.87	-10.2	33.42	-9.2	42.96	-0.9
Submarket: Oklahoma West Area	34.49	3.7	31.31	-2.2	30.55	-2.7	37.90	1.0
Submarket Scale: Midscale Chains	49.97	2.9	45.72	-2.9	44.56	-3.7	55.62	0.6
Competitive Set: Competitors	38.79	-3.9	35.85	-7.8	36.30	-4.3	44.71	-2.4

Revenue			
Month % Chg	YTD % Chg	Run 3 Mon % Chg	Run 12 Mon % Chg
-62.2	-55.6	-49.4	-38.7
-1.0	-5.7	-4.8	-1.4
-3.8	-6.2	-5.2	0.9
2.1	-3.3	-3.9	0.0
2.9	-2.9	-3.7	1.2
-3.9	-7.8	-4.3	-2.4

Sleep Inn & Suites Hennessey North
Market: Oklahoma Area
Market Class: Midscale Class
Submarket: Oklahoma West Area
Submarket Scale: Midscale Chains
Competitive Set: Competitors

Census/Sample - Properties & Rooms					
Census		Sample		Sample %	
Properties	Rooms	Properties	Rooms	Rooms	
Market: Oklahoma Area	513	31077	239	17119	55.1
Market Class: Midscale Class	63	4543	44	3201	70.5
Submarket: Oklahoma West Area	184	10369	88	6605	63.7
Submarket Scale: Midscale Chains	52	3937	52	3937	100.0
Competitive Set: Competitors	5	334	5	334	100.0

Market: Oklahoma Area
Market Class: Midscale Class
Submarket: Oklahoma West Area
Submarket Scale: Midscale Chains
Competitive Set: Competitors

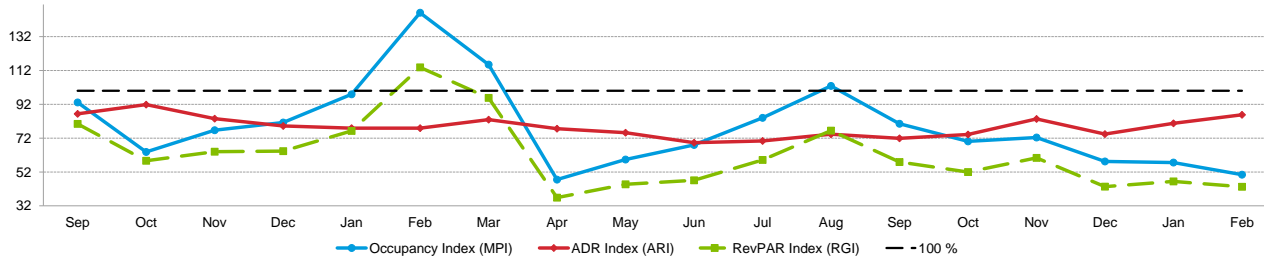
# Tab 4 - Competitive Set Report

Sleep Inn & Suites Hennessey North 522 N Main St Hennessey, OK 73742-1019 Phone: (405) 853-2126

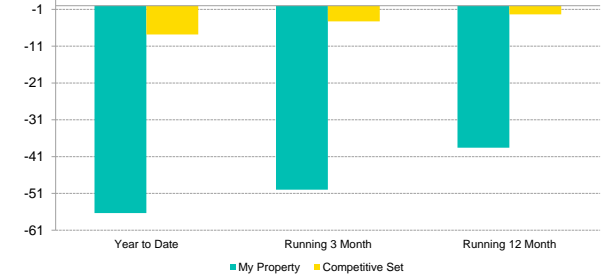
STR # 62749 ChainID: OK223 MgtCo: None Owner: None

For the Month of: February 2024 Date Created: March 16, 2024 Monthly Competitive Set Data Excludes Subject Property

## Monthly Indexes



## RevPAR Percent Change



Occupancy (%)	2022				2023												2024	
	Sep	Oct	Nov	Dec	Jan	Feb	Mar	Apr	May	Jun	Jul	Aug	Sep	Oct	Nov	Dec	Jan	Feb
My Property	50.7	39.2	38.9	34.1	41.9	68.6	58.9	29.3	41.1	42.0	43.6	49.1	39.9	41.9	40.6	27.8	25.5	26.2
Competitive Set	54.4	61.4	50.7	41.9	42.8	47.0	51.0	61.7	69.2	61.8	51.9	47.7	49.5	59.8	56.1	47.8	44.3	52.0
Index (MPI)	93.2	63.8	76.7	81.3	97.9	146.1	115.5	47.5	59.4	67.9	84.0	102.9	80.5	70.1	72.4	58.2	57.6	50.4
Rank	5 of 6	6 of 6	5 of 6	5 of 6	4 of 6	1 of 6	2 of 6	6 of 6	6 of 6	6 of 6	5 of 6	4 of 6	5 of 6	5 of 6	5 of 6	6 of 6	5 of 6	6 of 6

% Chg	2022				2023												2024	
	Sep	Oct	Nov	Dec	Jan	Feb	Mar	Apr	May	Jun	Jul	Aug	Sep	Oct	Nov	Dec	Jan	Feb
My Property	-16.2	-40.2	-6.0	-36.0	-20.9	52.1	-18.4	-44.7	-27.1	-37.4	-46.7	-15.8	-21.3	6.9	4.5	-18.4	-39.1	-61.8
Competitive Set	5.4	3.4	2.5	-11.5	-15.5	-16.2	-8.6	26.3	13.2	-2.0	-19.9	-3.8	-9.0	-2.6	10.6	14.0	3.5	10.6
Index (MPI)	-20.5	-42.2	-8.3	-27.7	-6.4	81.4	-10.8	-56.2	-35.6	-36.1	-33.5	-12.5	-13.6	9.8	-5.5	-28.4	-41.2	-65.5
Rank	6 of 6	6 of 6	6 of 6	5 of 6	4 of 6	1 of 6	5 of 6	6 of 6	6 of 6	6 of 6	6 of 6	6 of 6	6 of 6	2 of 6	4 of 6	6 of 6	6 of 6	6 of 6

Year To Date			Running 3 Month			Running 12 Month		
2022	2023	2024	2022	2023	2024	2022	2023	2024
49.2	54.6	25.8	50.6	47.5	26.5	54.9	55.1	38.9
53.2	44.8	47.9	51.2	43.8	47.9	54.3	53.5	54.4
92.5	121.9	53.9	98.9	108.5	55.4	101.1	103.0	71.5
3 of 6	2 of 6	6 of 6	3 of 6	3 of 6	6 of 6	3 of 6	3 of 6	5 of 6

ADR	2022				2023												2024	
	Sep	Oct	Nov	Dec	Jan	Feb	Mar	Apr	May	Jun	Jul	Aug	Sep	Oct	Nov	Dec	Jan	Feb
My Property	73.70	76.31	70.62	68.11	68.40	66.93	68.27	66.47	69.74	60.38	58.39	60.87	60.19	59.29	63.89	57.85	60.53	64.04
Competitive Set	85.32	83.09	84.54	86.00	87.81	85.91	82.31	85.70	92.70	87.11	83.00	81.88	83.71	79.90	76.65	77.74	74.99	74.62
Index (ARI)	86.4	91.8	83.5	79.2	77.9	77.9	82.9	77.6	75.2	69.3	70.4	74.3	71.9	74.2	83.3	74.4	80.7	85.8
Rank	4 of 6	4 of 6	5 of 6	5 of 6	4 of 6	5 of 6	4 of 6	5 of 6	5 of 6	5 of 6	5 of 6	5 of 6	5 of 6	5 of 6	4 of 6	4 of 6	4 of 6	4 of 6

Year To Date			Running 3 Month			Running 12 Month		
2022	2023	2024	2022	2023	2024	2022	2023	2024
71.75	67.52	62.25	71.43	67.67	60.68	72.73	72.04	62.70
80.32	86.87	74.80	79.63	86.58	75.81	85.67	85.60	82.21
89.3	77.7	83.2	89.7	78.2	80.0	84.9	84.2	76.3
4 of 6	5 of 6	4 of 6	4 of 6	5 of 6	4 of 6	5 of 6	4 of 6	5 of 6

% Chg	2022				2023												2024	
	Sep	Oct	Nov	Dec	Jan	Feb	Mar	Apr	May	Jun	Jul	Aug	Sep	Oct	Nov	Dec	Jan	Feb
My Property	3.7	7.5	-3.5	-3.9	-5.2	-6.0	-6.4	-11.0	-9.7	-18.8	-16.2	-14.7	-18.3	-22.3	-9.5	-15.1	-11.5	-4.3
Competitive Set	3.8	6.4	2.5	10.0	5.6	10.9	-4.0	-0.8	5.9	-3.1	3.6	-4.9	-1.9	-3.8	-9.3	-9.6	-14.6	-13.1
Index (ARI)	-0.1	1.0	-5.8	-12.7	-10.2	-15.3	-2.4	-10.3	-14.7	-16.2	-19.2	-10.3	-16.8	-19.2	-0.2	-6.0	3.6	10.2
Rank	4 of 6	1 of 6	5 of 6	6 of 6	6 of 6	6 of 6	4 of 6	5 of 6	6 of 6	6 of 6	6 of 6	6 of 6	6 of 6	6 of 6	2 of 6	4 of 6	3 of 6	2 of 6

Year To Date			Running 3 Month			Running 12 Month		
2022	2023	2024	2022	2023	2024	2022	2023	2024
6.8	-5.9	-7.8	7.5	-5.3	-10.3	2.4	-0.9	-13.0
7.0	8.2	-13.9	6.1	8.7	-12.4	12.5	-0.1	-4.0
-0.2	-13.0	7.1	1.3	-12.9	2.4	-9.0	-0.9	-9.4
3 of 6	6 of 6	2 of 6	3 of 6	6 of 6	4 of 6	6 of 6	4 of 6	6 of 6

RevPAR	2022				2023												2024	
	Sep	Oct	Nov	Dec	Jan	Feb	Mar	Apr	May	Jun	Jul	Aug	Sep	Oct	Nov	Dec	Jan	Feb
My Property	37.34	29.88	27.45	23.20	28.64	45.94	40.22	19.50	28.69	25.36	25.46	29.88	24.00	24.82	25.94	16.09	15.43	16.78
Competitive Set	46.41	51.00	42.86	36.05	37.55	40.37	41.98	52.91	64.19	53.85	43.06	39.08	41.45	47.75	42.98	37.15	33.19	38.79
Index (RGI)	80.5	58.6	64.0	64.4	76.3	113.8	95.8	36.9	44.7	47.1	59.1	76.5	57.9	52.0	60.4	43.3	46.5	43.3
Rank	5 of 6	5 of 6	5 of 6	5 of 6	4 of 6	3 of 6	4 of 6	6 of 6	6 of 6	5 of 6	5 of 6	5 of 6	5 of 6	5 of 6	5 of 6	6 of 6	5 of 6	6 of 6

Year To Date			Running 3 Month			Running 12 Month		
2022	2023	2024	2022	2023	2024	2022	2023	2024
35.31	36.85	16.08	36.14	32.15	16.08	39.95	39.69	24.38
42.72	38.89	35.85	40.75	37.91	36.30	46.53	45.79	44.71
82.7	94.8	44.9	88.7	84.8	44.3	85.9	86.7	54.5
4 of 6	4 of 6	5 of 6	4 of 6	4 of 6	5 of 6	4 of 6	4 of 6	5 of 6

% Chg	2022				2023												2024	
	Sep	Oct	Nov	Dec	Jan	Feb	Mar	Apr	May	Jun	Jul	Aug	Sep	Oct	Nov	Dec	Jan	Feb
My Property	-13.1	-35.7	-9.2	-38.5	-25.0	42.9	-23.6	-50.7	-34.2	-49.1	-55.4	-28.2	-35.7	-16.9	-5.5	-30.7	-46.1	-63.5
Competitive Set	9.4	10.0	5.1	-2.6	-10.7	-7.1	-12.3	25.3	19.9	-5.1	-16.9	-8.5	-10.7	-6.4	0.3	3.0	-11.6	-3.9
Index (RGI)	-20.5	-41.6	-13.6	-36.9	-15.9	53.8	-12.9	-60.7	-45.1	-46.4	-46.2	-21.5	-28.1	-11.3	-5.7	-32.7	-39.1	-62.0
Rank	6 of 6	6 of 6	6 of 6	6 of 6	5 of 6	1 of 6	5 of 6	6 of 6	6 of 6	6 of 6	6 of 6	6 of 6	6 of 6	5 of 6	4 of 6	6 of 6	6 of 6	6 of 6

Year To Date			Running 3 Month			Running 12 Month		
2022	2023	2024	2022	2023	2024	2022	2023	2024
22.7	4.4	-56.4	32.7	-11.0	-50.0	50.2	-0.6	-38.6
41.0	-9.0	-7.8	40.2	-7.0	-4.3	27.4	-1.6	-2.4
-13.0	14.6	-52.7	-5.3	-4.4	-47.7	17.9	1.0	-37.1
4 of 6	2 of 6	6 of 6	3 of 6	3 of 6	6 of 6	1 of 6	3 of 6	6 of 6

2024 © CoStar Group. This STR Report is a publication of STR, LLC and STR Global, Ltd., CoStar Group companies, and is intended solely for use by paid subscribers. The information in the STR Report is provided on an "as is" and "as available" basis and should not be construed as investment, tax, accounting or legal advice. Reproduction or distribution of this STR Report, in whole or part, without written permission is prohibited and subject to legal action. If you have received this report and are NOT a subscriber to this STR Report, please contact us immediately. Source: 2024 STR, LLC / STR Global, Ltd. trading as "STR".

# Tab 5 - Response Report

Sleep Inn & Suites Hennessey North 522 N Main St Hennessey, OK 73742-1019 Phone: (405) 853-2126  
 STR # 62749 ChainID: OK223 MgtCo: None Owner: None  
 For the Month of: February 2024 Date Created: March 16, 2024

## This Year

Feb 14th - Valentine's Day  
 Feb 19th - Presidents' Day

## February 2024 (This Year)

Sun	Mon	Tue	Wed	Thu	Fri	Sat
				1	2	3
4	5	6	7	8	9	10
11	12	13	14	15	16	17
18	19	20	21	22	23	24
25	26	27	28	29		

## February 2023 (Last Year)

Sun	Mon	Tue	Wed	Thu	Fri	Sat
			1	2	3	4
5	6	7	8	9	10	11
12	13	14	15	16	17	18
19	20	21	22	23	24	25
26	27	28				

## Last Year

Feb 14th - Valentine's Day  
 Feb 20th - Presidents' Day

STR#	Name	City, State	Zip	Phone	Rooms	Open Date
62749	Sleep Inn & Suites Hennessey North	Hennessey, OK	73742-1019	(405) 853-2126	50	201308
36764	Baymont by Wyndham Enid	Enid, OK	73703	(580) 234-6800	58	199806
63401	Country Inn & Suites Enid	Enid, OK	73703	(580) 599-0372	77	201411
63750	Best Western Plus Fairview Inn & Suites	Fairview, OK	73737	(580) 227-2880	52	201601
64464	La Quinta Inn & Suites by Wyndham Enid	Enid, OK	73703	(580) 233-7100	70	201511
68907	Holiday Inn Express & Suites Kingfisher	Kingfisher, OK	73750	(405) 375-3210	77	201911
					384	

2022												2023												
Mar	Apr	May	Jun	Jul	Aug	Sep	Oct	Nov	Dec	Jan	Feb	Mar	Apr	May	Jun	Jul	Aug	Sep	Oct	Nov	Dec	Jan	Feb	
●	●	●	●	●	●	●	●	●	●	●	●	●	●	●	●	●	●	●	●	●	●	●	●	
●	●	●	●	●	●	●	●	●	●	●	●	●	●	●	●	●	●	●	●	●	●	●	●	
●	●	●	●	●	●	●	●	●	●	●	●	●	●	●	●	●	●	●	●	●	●	●	●	
●	●	●	●	●	●	●	●	●	●	●	●	●	●	●	●	●	●	●	●	●	●	●	●	
●	●	●	●	●	●	●	●	●	●	●	●	●	●	●	●	●	●	●	●	●	●	●	●	
●	●	●	●	●	●	●	●	●	●	●	●	●	●	●	●	●	●	●	●	●	●	●	●	
●	●	●	●	●	●	●	●	●	●	●	●	●	●	●	●	●	●	●	●	●	●	●	●	

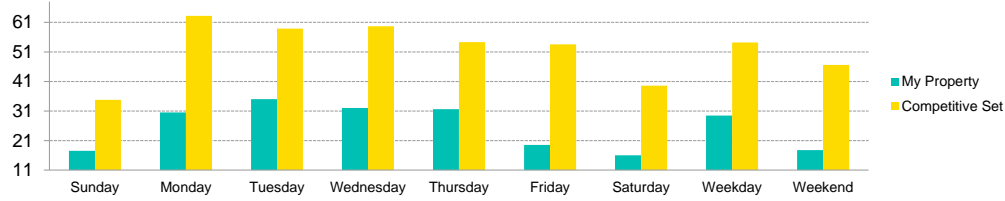
Data received:

- = Monthly Only
- = Monthly & Daily

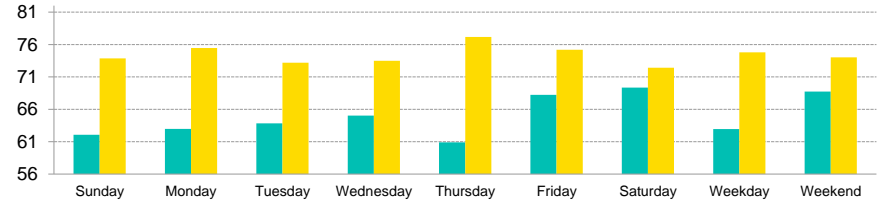
# Tab 6 - Day of Week and Weekday/Weekend Report

Sleep Inn & Suites Hennessey North 522 N Main St Hennessey, OK 73742-1019 Phone: (405) 853-2126  
 STR # 62749 ChainID: OK223 MgtCo: None Owner: None  
 For the Month of: February 2024 Date Created: March 16, 2024 Monthly Competitive Set Data Excludes Subject Property

### Current Month Occupancy



### Current Month ADR



Day of Week	Time Period	Occupancy (%)			Average Daily Rate			RevPAR											
		My Property	Competitive Set	Index (MPI)	My Property	Competitive Set	Index (ARI)	My Property	Competitive Set	Index (RGI)									
Sunday	Current Month	17.5	-73.3	34.8	21.3	50.3	-78.0	62.07	-4.7	73.87	-17.9	84.0	16.0	10.86	-74.5	25.69	-0.3	42.3	-74.4
	Year To Date	19.3	-63.0	33.3	22.6	57.9	-69.8	60.07	-10.3	73.58	-15.7	81.6	6.4	11.56	-66.8	24.48	3.4	47.2	-67.9
	Running 3 Month	20.5	-57.0	33.5	19.1	61.0	-63.8	60.79	-9.0	73.22	-15.3	83.0	7.4	12.44	-60.8	24.55	0.9	50.7	-61.2
	Running 12 Month	27.0	-42.5	38.6	0.0	69.8	-42.5	58.68	-16.2	80.13	-4.5	73.2	-12.3	15.83	-51.8	30.96	-4.5	51.1	-49.5
Monday	Current Month	30.5	-58.5	63.2	24.5	48.3	-66.7	62.97	-5.8	75.45	-11.7	83.5	6.7	19.21	-60.9	47.69	9.9	40.3	-64.4
	Year To Date	25.8	-54.0	50.3	10.4	51.2	-58.3	62.27	-7.0	74.99	-12.1	83.0	5.9	16.05	-57.2	37.72	-3.0	42.6	-55.8
	Running 3 Month	28.9	-40.1	50.9	13.6	56.8	-47.3	60.60	-12.1	74.92	-11.3	80.9	-0.9	17.53	-47.4	38.16	0.7	45.9	-47.8
	Running 12 Month	39.8	-27.3	56.7	5.3	70.2	-31.0	60.52	-15.3	80.37	-4.2	75.3	-11.6	24.07	-38.4	45.53	0.9	52.9	-39.0
Tuesday	Current Month	35.0	-54.5	58.9	4.1	59.5	-56.4	63.82	-5.9	73.19	-13.6	87.2	8.9	22.34	-57.2	43.08	-10.0	51.9	-52.5
	Year To Date	28.7	-54.1	53.1	3.9	54.0	-55.8	61.66	-10.3	72.41	-15.5	85.1	6.2	17.67	-58.8	38.46	-12.2	46.0	-53.1
	Running 3 Month	30.6	-43.5	53.0	8.4	57.8	-47.9	59.77	-12.7	73.43	-14.1	81.4	1.6	18.30	-50.7	38.90	-6.8	47.0	-47.0
	Running 12 Month	40.5	-31.4	59.4	2.9	68.2	-33.3	61.42	-13.9	80.59	-3.9	76.2	-10.4	24.88	-40.9	47.90	-1.1	51.9	-40.2
Wednesday	Current Month	32.0	-54.9	59.7	21.4	53.6	-62.9	65.03	-4.5	73.48	-15.9	88.5	13.6	20.81	-57.0	43.87	2.1	47.4	-57.8
	Year To Date	27.8	-49.5	56.2	8.3	49.5	-53.3	61.93	-9.0	73.76	-17.7	84.0	10.5	17.20	-54.1	41.42	-10.9	41.5	-48.5
	Running 3 Month	30.3	-36.6	55.4	13.1	54.7	-44.0	59.84	-11.5	74.52	-15.8	80.3	5.1	18.14	-43.9	41.28	-4.7	43.9	-41.1
	Running 12 Month	41.7	-28.6	60.7	2.4	68.6	-30.2	61.46	-14.4	81.80	-5.0	75.1	-9.9	25.60	-38.9	49.68	-2.7	51.5	-37.2
Thursday	Current Month	31.6	-48.6	54.3	6.3	58.2	-51.7	60.91	-8.0	77.16	-9.8	78.9	2.0	19.25	-52.7	41.89	-4.1	45.9	-50.7
	Year To Date	34.4	-35.3	51.8	6.3	66.5	-39.2	61.32	-9.2	78.99	-9.2	77.6	0.0	21.12	-41.3	40.91	-3.5	51.6	-39.1
	Running 3 Month	31.1	-31.5	51.5	9.6	60.4	-37.5	60.11	-10.4	78.48	-9.4	76.6	-1.1	18.68	-38.6	40.39	-0.7	46.2	-38.2
	Running 12 Month	41.1	-26.6	57.7	1.7	71.2	-27.8	62.05	-13.2	82.76	-2.6	75.0	-10.9	25.50	-36.3	47.76	-1.0	53.4	-35.7
Friday	Current Month	19.5	-71.1	53.6	2.5	36.4	-71.8	68.22	0.7	75.19	-11.1	90.7	13.3	13.30	-70.9	40.28	-8.9	33.0	-68.1
	Year To Date	24.0	-54.1	50.8	2.6	47.3	-55.2	64.36	-4.4	76.52	-12.2	84.1	8.8	15.45	-56.1	38.84	-9.9	39.8	-51.3
	Running 3 Month	23.8	-45.4	50.6	5.5	47.1	-48.3	61.76	-8.3	80.80	-7.1	76.4	-1.2	14.73	-49.9	40.87	-2.0	36.0	-48.9
	Running 12 Month	41.5	-24.2	55.7	0.2	74.4	-24.4	66.07	-9.4	85.68	-2.8	77.1	-6.8	27.39	-31.4	47.73	-2.6	57.4	-29.6
Saturday	Current Month	16.0	-75.2	39.6	-2.4	40.4	-74.6	69.36	4.5	72.43	-15.3	95.8	23.4	11.10	-74.1	28.68	-17.3	38.7	-68.6
	Year To Date	19.3	-61.7	38.0	-6.9	50.7	-58.9	65.16	2.5	72.16	-16.3	90.3	16.5	12.54	-62.7	27.39	-22.1	45.8	-52.1
	Running 3 Month	20.3	-55.6	40.4	-1.8	50.3	-54.8	62.88	-6.5	74.38	-15.3	84.5	10.4	12.77	-58.4	30.04	-16.8	42.5	-50.0
	Running 12 Month	40.4	-27.7	51.7	-1.4	78.2	-26.7	67.25	-10.3	83.79	-4.9	80.3	-5.7	27.19	-35.2	43.31	-6.3	62.8	-30.8
Weekday/Weekend	Current Month	29.4	-57.8	54.2	14.7	54.3	-63.2	62.96	-5.9	74.79	-13.3	84.2	8.6	18.53	-60.3	40.51	-0.5	45.7	-60.0
	Year To Date	27.4	-51.0	49.3	10.4	55.5	-55.6	61.54	-9.1	74.82	-13.9	82.3	5.7	16.84	-55.4	36.88	-5.0	45.7	-53.1
	Running 3 Month	28.3	-41.9	48.9	12.4	57.9	-48.3	60.18	-11.3	75.02	-13.0	80.2	2.1	17.02	-48.4	36.66	-2.3	46.4	-47.2
	Running 12 Month	38.1	-30.8	54.7	2.6	69.6	-32.6	61.00	-14.4	81.22	-4.0	75.1	-10.8	23.22	-40.8	44.40	-1.5	52.3	-39.9
Weekend (Fri-Sat)	Current Month	17.8	-73.1	46.6	0.4	38.1	-73.2	68.74	2.5	74.02	-12.9	92.9	17.7	12.20	-72.4	34.48	-12.6	35.4	-68.5
	Year To Date	21.6	-57.8	44.4	-1.7	48.7	-57.1	64.72	-3.6	74.65	-13.9	86.7	12.0	13.99	-59.3	33.12	-15.4	42.3	-51.9
	Running 3 Month	22.1	-50.6	45.5	2.2	48.5	-51.6	62.28	-7.4	77.95	-10.8	79.9	3.8	13.75	-54.3	35.45	-8.9	38.8	-49.8
	Running 12 Month	40.9	-26.0	53.7	-0.6	76.2	-25.6	66.65	-9.9	84.77	-3.9	78.6	-6.3	27.29	-33.3	45.52	-4.4	60.0	-30.3
Total	Current Month	26.2	-61.8	52.0	10.6	50.4	-65.5	64.04	-4.3	74.62	-13.1	85.8	10.2	16.78	-63.5	38.79	-3.9	43.3	-62.0
	Year To Date	25.8	-52.7	47.9	7.1	53.9	-55.8	62.25	-7.8	74.80	-13.9	83.2	7.1	16.08	-56.4	35.85	-7.8	44.9	-52.7
	Running 3 Month	26.5	-44.2	47.9	9.3	55.4	-49.0	60.68	-10.3	75.81	-12.4	80.0	2.4	16.08	-50.0	36.30	-4.3	44.3	-47.7
	Running 12 Month	38.9	-29.4	54.4	1.7	71.5	-30.6	62.70	-13.0	82.21	-4.0	76.3	-9.4	24.38	-38.6	44.71	-2.4	54.5	-37.1

2024 © CoStar Group. This STR Report is a publication of STR, LLC and STR Global, Ltd., CoStar Group companies, and is intended solely for use by paid subscribers. The information in the STR Report is provided on an "as is" and "as available" basis and should not be construed as investment, tax, accounting or legal advice. Reproduction or distribution of this STR Report, in whole or part, without written permission is prohibited and subject to legal action. If you have received this report and are NOT a subscriber to this STR Report, please contact us immediately. Source: 2024 STR, LLC / STR Global, Ltd, trading as "STR".

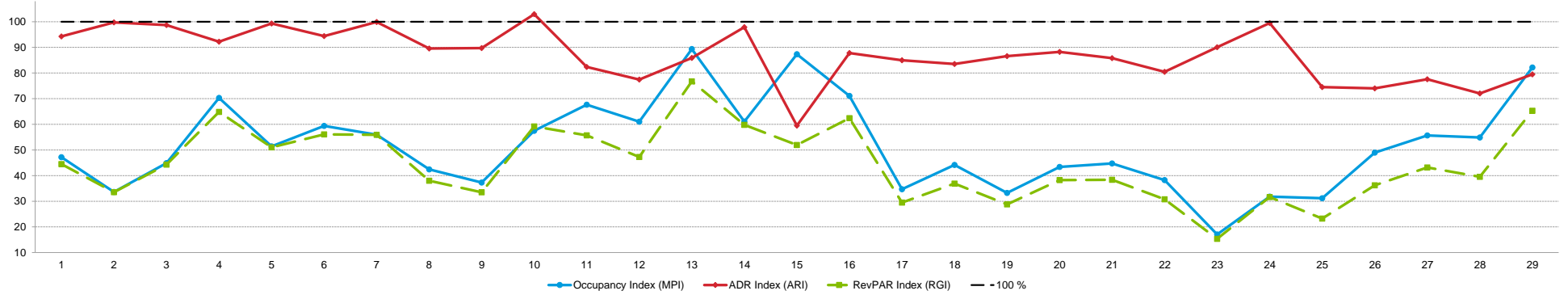
Tab 7 - Daily Data for the Month

Sleep Inn & Suites Hennessey North 522 N Main St Hennessey, OK 73742-1019 Phone: (405) 853-2126

STR # 62749 ChainID: OK223 MgtCo: None Owner: None

For the Month of: February 2024 Date Created: March 16, 2024 Daily Competitive Set Data Excludes Subject Property

Daily Indexes for the Month of February



	Th	Fr	Sa	Su	Mo	Tu	We	Th	Fr	Sa	Su	Mo	Tu	We	Th	Fr	Sa	Su	Mo	Tu	We	Th	Fr	Sa	Su	Mo	Tu	We	Th
<b>Occupancy (%)</b>	<b>February</b>																												
My Property	26.0	16.0	18.0	24.0	28.0	32.0	32.0	24.0	20.0	16.0	16.0	38.0	42.0	32.0	40.0	30.0	16.0	16.0	22.0	30.0	30.0	22.0	12.0	14.0	14.0	34.0	36.0	34.0	46.0
Competitive Set	55.1	47.6	40.1	34.1	54.5	53.9	57.2	56.6	53.6	27.8	23.7	62.3	47.0	52.4	45.8	42.2	46.1	36.2	66.2	69.2	67.1	57.5	70.4	44.0	44.9	69.5	64.7	62.0	56.0
Index (MPI)	47.2	33.6	44.9	70.3	51.4	59.4	56.0	42.4	37.3	57.5	67.6	61.0	89.4	61.1	87.3	71.1	34.7	44.2	33.2	43.4	44.7	38.3	17.1	31.8	31.2	48.9	55.7	54.9	82.2

	Th	Fr	Sa	Su	Mo	Tu	We	Th	Fr	Sa	Su	Mo	Tu	We	Th	Fr	Sa	Su	Mo	Tu	We	Th	Fr	Sa	Su	Mo	Tu	We	Th
<b>% Chg</b>																													
My Property	-48.0	-73.3	-66.7	-58.6	-60.0	-61.0	-56.8	-64.7	-66.7	-73.3	-75.0	-44.1	-38.2	-50.0	-23.1	-62.5	-77.8	-80.0	-77.6	-60.5	-65.1	-71.1	-82.9	-80.6	-76.7	-41.4	-56.1	-52.8	-23.3
Competitive Set	34.3	15.2	0.8	-1.7	12.3	2.9	18.6	13.2	4.7	9.4	12.9	20.2	-14.2	-1.7	-16.8	-23.4	-9.9	-2.4	16.9	11.1	21.7	-1.0	14.6	-3.9	105.5	50.6	14.3	21.1	-13.0
Index (MPI)	-61.3	-76.9	-66.9	-57.9	-64.4	-62.1	-63.5	-68.8	-68.2	-75.6	-77.8	-53.5	-28.0	-49.1	-7.5	-51.1	-75.3	-79.5	-80.8	-64.5	-71.3	-70.8	-85.0	-79.8	-88.6	-61.1	-61.6	-61.0	-11.9

	1	2	3	4	5	6	7	8	9	10	11	12	13	14	15	16	17	18	19	20	21	22	23	24	25	26	27	28	29
<b>ADR</b>	<b>February</b>																												
My Property	62.32	69.59	70.81	67.73	71.71	67.62	70.61	67.43	67.69	70.42	60.74	62.53	68.32	73.00	60.47	66.95	62.68	59.22	62.54	63.89	62.12	60.36	70.48	73.94	57.14	56.54	55.14	54.86	57.35
Competitive Set	66.10	69.77	71.74	73.44	72.20	71.62	70.67	75.29	75.44	68.40	73.76	80.73	79.54	74.58	101.64	76.25	73.74	70.89	72.22	72.41	72.38	75.03	78.24	74.32	76.67	76.38	71.10	76.15	72.17
Index (ARI)	94.3	99.7	98.7	92.2	99.3	94.4	99.9	89.6	89.7	102.9	82.4	77.5	85.9	97.9	59.5	87.8	85.0	83.5	86.6	88.2	85.8	80.4	90.1	99.5	74.5	74.0	77.6	72.0	79.5

	1	2	3	4	5	6	7	8	9	10	11	12	13	14	15	16	17	18	19	20	21	22	23	24	25	26	27	28	29
<b>% Chg</b>																													
My Property	-3.6	4.0	7.6	3.1	6.3	-0.8	5.5	-0.5	2.9	8.0	-8.3	-6.9	4.7	4.5	-7.7	-1.4	-7.6	-11.9	-6.6	-6.7	-8.3	-8.9	0.6	11.6	-5.8	-13.7	-20.0	-21.7	-16.7
Competitive Set	-18.2	-18.0	-18.6	-18.7	-15.6	-11.6	-16.3	-12.8	-15.3	-20.5	-17.6	-6.6	-7.6	-22.5	15.0	-10.9	-15.1	-13.6	-17.6	-18.8	-16.1	-12.2	-1.8	-8.8	-25.6	-6.4	-13.1	-10.6	-17.3
Index (ARI)	17.8	26.9	32.1	26.8	25.9	12.2	26.1	14.2	21.5	35.9	11.4	-0.3	13.3	34.8	-19.8	10.7	8.8	2.0	13.4	14.8	9.4	3.8	2.5	22.3	26.7	-7.8	-7.9	-12.4	0.8

	1	2	3	4	5	6	7	8	9	10	11	12	13	14	15	16	17	18	19	20	21	22	23	24	25	26	27	28	29
<b>RevPAR</b>	<b>February</b>																												
My Property	16.20	11.13	12.75	16.25	20.08	21.64	22.59	16.18	13.54	11.27	9.72	23.76	28.70	23.36	24.19	20.09	10.03	9.48	13.76	19.17	18.64	13.28	8.46	10.35	8.00	19.22	19.85	18.65	26.38
Competitive Set	36.42	33.22	28.78	25.07	39.34	38.60	40.41	42.60	40.43	19.05	17.45	50.27	37.39	39.08	46.56	32.19	34.00	25.68	47.78	50.08	48.55	43.13	55.05	32.71	34.43	53.06	45.98	47.19	40.41
Index (RGI)	44.5	33.5	44.3	64.8	51.0	56.1	55.9	38.0	33.5	59.2	55.7	47.3	76.7	59.8	51.9	62.4	29.5	36.9	28.8	38.3	38.4	30.8	15.4	31.6	23.2	36.2	43.2	39.5	65.3

	1	2	3	4	5	6	7	8	9	10	11	12	13	14	15	16	17	18	19	20	21	22	23	24	25	26	27	28	29
<b>% Chg</b>																													
My Property	-49.9	-72.3	-64.1	-57.3	-57.5	-61.3	-54.4	-64.9	-65.7	-71.2	-77.1	-48.0	-35.4	-47.8	-29.0	-63.0	-79.5	-82.4	-79.0	-63.2	-68.0	-73.6	-82.7	-78.3	-78.0	-49.4	-64.9	-63.0	-36.1
Competitive Set	9.9	-5.6	-18.0	-20.1	-5.2	-9.1	-0.7	-1.3	-11.3	-13.0	-7.1	12.3	-20.8	-23.8	-4.3	-31.8	-23.5	-15.7	-3.7	-9.8	2.1	-13.2	12.6	-12.3	52.9	41.0	-0.7	8.2	-28.1
Index (RGI)	-54.4	-70.6	-56.3	-46.6	-55.2	-57.4	-54.1	-64.4	-61.3	-66.9	-75.3	-53.7	-18.4	-31.5	-25.8	-45.8	-73.1	-79.1	-78.2	-59.2	-68.7	-69.6	-84.7	-75.2	-85.6	-64.1	-64.6	-65.8	-11.1

2024 © CoStar Group. This STR Report is a publication of STR, LLC and STR Global, Ltd. CoStar Group comprises, and is intended solely for use by paid subscribers. The information in the STR Report is provided on an "as is" and "as available" basis and should not be construed as investment, tax, accounting or legal advice. Reproduction or distribution of this STR Report, in whole or part, without written permission is prohibited and subject to legal action. If you have received this report and are NOT a subscriber to this STR Report, please contact us immediately. Source: 2024 STR, LLC / STR Global, Ltd. trading as "STR".



How can we assist you?

**Glossary:**

For all STR definitions, please click here or visit [www.str.com/data-insights/resources/glossary](http://www.str.com/data-insights/resources/glossary)

**Frequently Asked Questions (FAQ):**

For all STR FAQs, please click here or visit [www.str.com/data-insights/resources/FAQ](http://www.str.com/data-insights/resources/FAQ)

For additional support, please [contact](#) your regional office.

For the latest in industry news, visit [HotelNewsNow.com](http://HotelNewsNow.com).

To learn more about the Hotel Data Conference, visit [HotelDataConference.com](http://HotelDataConference.com).