

STR # 62749 / Created March 17, 2022



Monthly STAR Report : Sleep Inn & Suites Hennessey North

For the Month of: February 2022

Currency: US Dollar / Competitive Set Data Excludes Subject Property

Table Of Contents	1
Monthly Performance at a Glance	2
STAR Summary	3
Competitive Set Report	4
Response Report	5
Day of Week & Weekday/Weekend	6
Daily Data for the Month	7
Help	8

Corporate North American Headquarters
T: +1 (615) 824 8664
support@str.com www.str.com

International Headquarters
T: +44 (0) 207 922 1930
hotelinfo@str.com www.str.com

2022 © CoStar Group. This STR Report is a publication of STR, LLC and STR Global, Ltd., CoStar Group companies, and is intended solely for use by paid subscribers. The information in the STR Report is provided on an "as is" and "as available" basis and should not be construed as investment, tax, accounting or legal advice. Reproduction or distribution of this STR Report, in whole or part, without written permission is prohibited and subject to legal action. If you have received this report and are NOT a subscriber to this STR Report, please contact us immediately. Source: 2022 STR, LLC / STR Global, Ltd. trading as "STR".

Tab 2 - Monthly Performance at a Glance - My Property vs. Competitive Set

Sleep Inn & Suites Hennessey North 522 N Main St Hennessey, OK 73742-1019 Phone: (405) 853-2126

STR # 62749 ChainID: OK223 MgtCo: None Owner: None

For the Month of: February 2022 Date Created: March 17, 2022 Monthly Competitive Set Data Excludes Subject Property

February 2022

	Occupancy (%)			ADR			RevPAR		
	My Prop	Comp Set	Index (MPI)	My Prop	Comp Set	Index (ARI)	My Prop	Comp Set	Index (RGI)
Current Month	45.1	56.1	80.5	71.22	77.46	91.9	32.15	43.44	74.0
Year To Date	49.2	53.2	92.5	71.75	80.31	89.3	35.31	42.72	82.7
Running 3 Month	50.6	51.2	98.9	71.43	79.63	89.7	36.14	40.75	88.7
Running 12 Month	54.9	54.3	101.1	72.73	85.66	84.9	39.95	46.54	85.8

February 2022 vs. 2021 Percent Change (%)

	Occupancy			ADR			RevPAR		
	My Prop	Comp Set	Index (MPI)	My Prop	Comp Set	Index (ARI)	My Prop	Comp Set	Index (RGI)
Current Month	-5.5	26.1	-25.1	5.1	4.4	0.6	-0.7	31.8	-24.6
Year To Date	15.0	31.7	-12.7	6.8	7.1	-0.3	22.7	41.0	-13.0
Running 3 Month	23.5	32.2	-6.6	7.5	6.1	1.3	32.7	40.2	-5.3
Running 12 Month	46.7	13.3	29.6	2.4	12.5	-9.0	50.2	27.4	17.9

Tab 3 - STAR Summary - My Property vs. Comp Set and Industry Segments

Sleep Inn & Suites Hennessey North 522 N Main St Hennessey, OK 73742-1019 Phone: (405) 853-2126

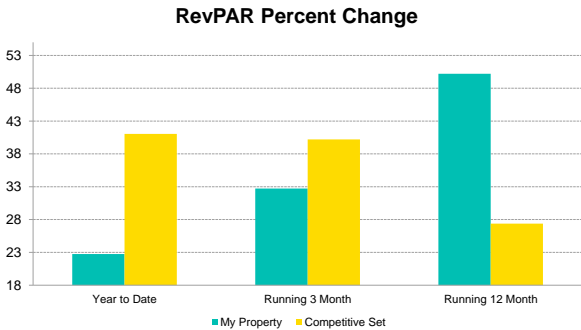
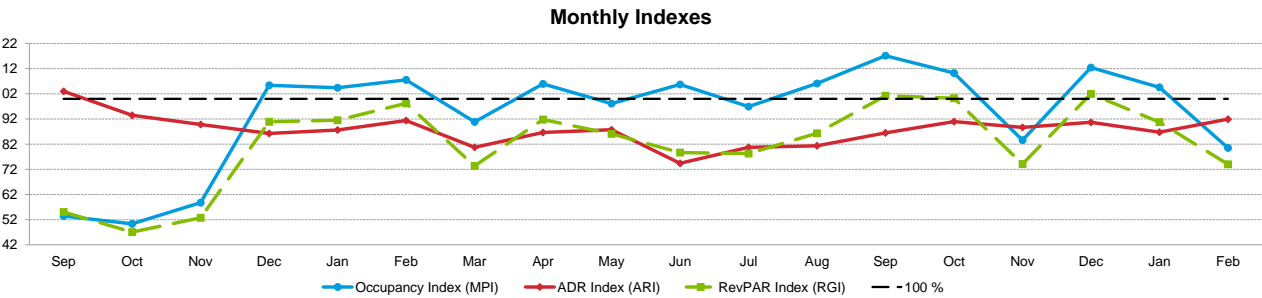
STR # 62749 ChainID: OK223 MgtCo: None Owner: None

For the Month of: February 2022 Date Created: March 17, 2022 Monthly Competitive Set Data Excludes Subject Property

	Occupancy (%)								Supply			
	Current Month	% Chg	Year to Date	% Chg	Running 3 Month	% Chg	Running 12 Month	% Chg	Month % Chg	YTD % Chg	Run 3 Mon % Chg	Run 12 Mon % Chg
Sleep Inn & Suites Hennessey North	45.1	-5.5	49.2	15.0	50.6	23.5	54.9	46.7	0.0	0.0	0.0	0.0
Market: Oklahoma Area	49.5	21.2	45.7	19.1	44.9	24.4	53.1	37.8	3.5	3.5	3.5	2.5
Market Class: Midscale Class	52.2	14.3	47.5	11.7	46.5	17.2	56.0	33.1	-1.4	-1.4	-1.4	-1.1
Submarket: Oklahoma West Area	46.0	24.5	43.2	23.9	42.9	28.4	50.3	38.8	0.9	0.9	0.9	1.1
Submarket Scale: Midscale Chains	55.5	25.4	52.6	23.8	52.3	27.5	59.4	33.3	0.8	-0.8	-1.3	-1.6
Competitive Set: Competitors	56.1	26.1	53.2	31.7	51.2	32.2	54.3	13.3	0.0	0.0	0.0	0.0
	Average Daily Rate								Demand			
	Current Month	% Chg	Year to Date	% Chg	Running 3 Month	% Chg	Running 12 Month	% Chg	Month % Chg	YTD % Chg	Run 3 Mon % Chg	Run 12 Mon % Chg
Sleep Inn & Suites Hennessey North	71.22	5.1	71.75	6.8	71.43	7.5	72.73	2.4	-5.5	15.0	23.5	46.7
Market: Oklahoma Area	77.18	12.4	76.33	11.7	76.39	12.4	79.14	13.7	25.4	23.3	28.8	41.2
Market Class: Midscale Class	81.33	13.9	80.30	12.8	80.23	13.6	82.03	14.9	12.7	10.1	15.6	31.5
Submarket: Oklahoma West Area	75.99	8.5	75.07	7.2	74.95	8.0	77.09	12.3	25.6	25.1	29.6	40.3
Submarket Scale: Midscale Chains	89.42	10.8	88.73	10.8	88.89	12.0	91.60	14.5	26.4	22.8	25.8	31.2
Competitive Set: Competitors	77.46	4.4	80.31	7.1	79.63	6.1	85.66	12.5	26.1	31.7	32.2	13.3
	RevPAR								Revenue			
	Current Month	% Chg	Year to Date	% Chg	Running 3 Month	% Chg	Running 12 Month	% Chg	Month % Chg	YTD % Chg	Run 3 Mon % Chg	Run 12 Mon % Chg
Sleep Inn & Suites Hennessey North	32.15	-0.7	35.31	22.7	36.14	32.7	39.95	50.2	-0.7	22.7	32.7	50.2
Market: Oklahoma Area	38.24	36.2	34.92	33.1	34.31	39.9	41.98	56.7	40.9	37.7	44.8	60.6
Market Class: Midscale Class	42.47	30.1	38.15	26.0	37.27	33.2	45.92	52.9	28.3	24.3	31.3	51.1
Submarket: Oklahoma West Area	34.96	35.1	32.46	32.8	32.18	38.6	38.75	55.8	36.3	34.1	39.9	57.5
Submarket Scale: Midscale Chains	49.66	39.0	46.71	37.1	46.47	42.8	54.40	52.7	40.0	36.0	41.0	50.3
Competitive Set: Competitors	43.44	31.8	42.72	41.0	40.75	40.2	46.54	27.4	31.8	41.0	40.2	27.4
	Census/Sample - Properties & Rooms											
	Census		Sample		Sample %							
Properties		Rooms	Properties		Rooms	Rooms						
Market: Oklahoma Area		502	31431	234		16711	53.2					
Market Class: Midscale Class		52	3549	35		2257	63.6					
Submarket: Oklahoma West Area		179	10469	85		6235	59.6					
Submarket Scale: Midscale Chains		50	3733	49		3653	97.9					
Competitive Set: Competitors		5	334	5		334	100.0					

Tab 4 - Competitive Set Report

Sleep Inn & Suites Hennessey North 522 N Main St Hennessey, OK 73742-1019 Phone: (405) 853-2126
STR # 62749 ChainID: OK223 Mgt(Co: None Owner: None
For the Month of: February 2022 Date Created: March 17, 2022 Monthly Competitive Set Data Excludes Subject Property



Occupancy (%)	2020				2021												2022		Year To Date			Running 3 Month			Running 12 Month			
	Sep	Oct	Nov	Dec	Jan	Feb	Mar	Apr	May	Jun	Jul	Aug	Sep	Oct	Nov	Dec	Jan	Feb	2020	2021	2022	2020	2021	2022	2020	2021	2022	
My Property	29.4	31.3	32.3	37.5	38.3	47.8	49.6	56.3	60.9	76.9	49.6	46.8	60.5	65.5	41.3	53.2	52.9	45.1	65.4	42.8	49.2	52.9	41.0	50.6	67.9	37.4	54.9	
Competitive Set	55.0	62.1	54.9	35.6	36.7	44.5	54.6	53.1	62.1	72.8	51.2	44.1	51.6	59.4	49.5	47.3	50.6	56.1	49.4	40.4	53.2	45.1	38.7	51.2	57.0	48.0	54.3	
Index (MPI)	53.5	50.3	58.7	105.4	104.4	107.5	90.8	105.9	98.1	105.7	96.9	106.1	117.1	110.3	83.6	112.4	104.6	80.5	132.3	106.0	92.5	117.2	105.8	98.9	119.3	78.0	101.1	
Rank	6 of 6	6 of 6	6 of 6	2 of 6	3 of 6	3 of 6	4 of 6	3 of 6	2 of 6	2 of 6	4 of 6	3 of 6	3 of 6	2 of 6	5 of 6	3 of 6	3 of 6	4 of 6	1 of 6	3 of 6	3 of 6	2 of 6	3 of 6	3 of 6	1 of 6	6 of 6	3 of 6	
% Chg																												
My Property	-52.9	-60.2	-47.0	31.2	-31.0	-37.1	-26.1	59.2	131.4	197.4	33.5	14.2	105.7	109.3	28.1	42.0	38.0	-5.5	-15.5	-34.5	15.0	-33.9	-22.5	23.5	-23.6	-44.9	46.7	
Competitive Set	-3.2	-3.3	6.0	-3.4	-23.3	-13.2	6.6	34.5	57.2	43.8	0.0	-19.3	-6.1	-4.4	-10.0	33.1	37.9	26.1	-21.4	-18.3	31.7	-27.2	-14.1	32.2	-19.1	-15.8	13.3	
Index (MPI)	-51.4	-58.8	-50.0	35.7	-10.1	-27.5	-30.7	18.4	47.2	106.8	33.6	41.5	119.1	119.0	42.3	6.7	0.1	-25.1	7.5	-19.9	-12.7	-9.1	-9.7	-6.6	-5.5	-34.6	29.6	
Rank	5 of 5	5 of 5	5 of 5	2 of 6	4 of 6	5 of 6	5 of 6	3 of 6	2 of 6	1 of 6	1 of 6	1 of 6	1 of 6	1 of 6	2 of 6	3 of 6	3 of 6	4 of 6	2 of 5	5 of 6	4 of 6	4 of 5	5 of 6	4 of 6	4 of 5	6 of 6	1 of 6	

ADR	2020				2021												2022		Year To Date			Running 3 Month			Running 12 Month			
	Sep	Oct	Nov	Dec	Jan	Feb	Mar	Apr	May	Jun	Jul	Aug	Sep	Oct	Nov	Dec	Jan	Feb	2020	2021	2022	2020	2021	2022	2020	2021	2022	
My Property	79.90	73.66	66.54	64.84	66.55	67.77	67.29	71.48	78.74	76.98	75.48	70.66	71.07	71.00	73.15	70.88	72.15	71.22	74.40	67.20	71.75	75.18	66.45	71.43	85.07	71.05	72.73	
Competitive Set	77.57	78.81	74.11	75.14	75.95	74.17	83.34	82.50	89.72	103.47	93.50	86.89	82.20	78.08	82.49	78.16	83.16	77.46	80.54	75.02	80.31	80.52	75.06	79.63	82.38	76.16	85.66	
Index (ARI)	103.0	93.5	89.8	86.3	87.6	91.4	80.7	86.6	87.8	74.4	80.7	81.3	86.5	90.9	88.7	90.7	86.8	91.9	92.4	89.6	89.3	93.4	88.5	89.7	103.3	93.3	84.9	
Rank	3 of 6	4 of 6	4 of 6	4 of 6	4 of 6	3 of 6	5 of 6	5 of 6	5 of 6	6 of 6	5 of 6	5 of 6	4 of 6	4 of 6	4 of 6	4 of 6	4 of 6	4 of 6	4 of 6	4 of 6	4 of 6	4 of 6	4 of 6	4 of 6	4 of 6	4 of 6	5 of 6	
% Chg																												
My Property	-9.1	-11.3	-18.5	-17.5	-11.8	-7.9	-7.6	1.9	17.7	2.4	-3.7	-0.6	-11.0	-3.6	9.9	9.3	8.4	5.1	-18.2	-9.7	6.8	-14.9	-11.6	7.5	0.0	-16.5	2.4	
Competitive Set	-5.0	-0.9	-6.9	-6.6	-4.9	-8.7	7.2	14.2	22.6	32.8	20.3	13.7	6.0	-0.9	11.3	4.0	9.5	4.4	-4.3	-6.9	7.1	-3.7	-6.8	6.1	-2.7	-7.6	12.5	
Index (ARI)	-4.3	-10.5	-12.4	-11.7	-7.2	0.8	-13.8	-10.7	-4.0	-22.9	-19.9	-12.6	-16.1	-2.7	-1.2	5.1	-1.0	0.6	-14.5	-3.0	-0.3	-11.7	-5.2	1.3	2.8	-9.7	-9.0	
Rank	3 of 5	4 of 5	5 of 5	6 of 6	4 of 6	4 of 6	5 of 6	6 of 6	2 of 6	6 of 6	6 of 6	6 of 6	5 of 6	4 of 6	3 of 6	3 of 6	3 of 6	2 of 6	5 of 5	4 of 6	3 of 6	5 of 5	4 of 6	3 of 6	1 of 5	6 of 6	6 of 6	

RevPAR	2020				2021												2022		Year To Date			Running 3 Month			Running 12 Month			
	Sep	Oct	Nov	Dec	Jan	Feb	Mar	Apr	May	Jun	Jul	Aug	Sep	Oct	Nov	Dec	Jan	Feb	2020	2021	2022	2020	2021	2022	2020	2021	2022	
My Property	23.49	23.05	21.47	24.30	25.51	32.38	33.39	40.22	47.95	59.22	37.45	33.10	42.97	46.50	30.24	37.72	38.17	32.15	48.66	28.77	35.31	39.74	27.23	36.14	57.79	26.60	39.95	
Competitive Set	42.67	48.98	40.71	26.73	27.87	32.97	45.53	43.82	55.70	75.30	47.85	38.35	42.44	46.37	40.79	37.01	42.08	43.44	39.81	30.29	42.72	36.30	29.06	40.75	46.92	36.53	46.54	
Index (RGI)	55.1	47.1	52.7	90.9	91.5	98.2	73.3	91.8	86.1	78.6	78.3	86.3	101.3	100.3	74.1	101.9	90.7	74.0	122.2	95.0	82.7	109.5	93.7	88.7	123.2	72.8	85.8	
Rank	6 of 6	6 of 6	6 of 6	4 of 6	4 of 6	4 of 6	4 of 6	4 of 6	5 of 6	6 of 6	4 of 6	4 of 6	3 of 6	4 of 6	4 of 6	4 of 6	4 of 6	3 of 6	2 of 6	4 of 6	4 of 6	3 of 6	4 of 6	4 of 6	2 of 6	6 of 6	4 of 6	
% Chg																												
My Property	-57.2	-64.7	-56.8	8.2	-39.1	-42.0	-31.7	62.3	172.2	204.4	28.6	13.4	82.9	101.7	40.8	55.2	49.7	-0.7	-30.9	-40.9	22.7	-43.7	-31.5	32.7	-23.5	-54.0	50.2	
Competitive Set	-8.0	-4.2	-1.4	-9.8	-27.1	-20.7	14.3	53.6	92.7	91.0	20.3	-8.2	-0.5	-5.3	0.2	38.4	51.0	31.8	-24.8	-23.9	41.0	-29.9	-19.9	40.2	-21.3	-22.1	27.4	
Index (RGI)	-53.5	-63.2	-56.2	19.9	-16.6	-26.9	-40.2	5.7	41.3	59.4	6.9	23.6	83.9	113.1	40.6	12.1	-0.9	-24.6	-8.1	-22.3	-13.0	-19.7	-14.4	-5.3	-2.9	-40.9	17.9	
Rank	5 of 5	5 of 5	5 of 5	4 of 6	5 of 6	5 of 6	6 of 6	4 of 6	2 of 6	1 of 6	3 of 6	1 of 6	1 of 6	1 of 6	1 of 6	3 of 6	3 of 6	5 of 6	4 of 5	5 of 6	4 of 6	4 of 5	5 of 6	3 of 6	3 of 5	6 of 6	1 of 6	

Tab 5 - Response Report

Sleep Inn & Suites Hennessey North 522 N Main St Hennessey, OK 73742-1019 Phone: (405) 853-2126
STR # 62749 ChainID: OK223 MgtCo: None Owner: None
For the Month of: February 2022 Date Created: March 17, 2022

This Year
Feb 14th - Valentine's Day
Feb 21th - Presidents' Day

February 2022 (This Year)

Sun	Mon	Tue	Wed	Thu	Fri	Sat
		1	2	3	4	5
6	7	8	9	10	11	12
13	14	15	16	17	18	19
20	21	22	23	24	25	26
27	28					

February 2021 (Last Year)

Sun	Mon	Tue	Wed	Thu	Fri	Sat
	1	2	3	4	5	6
7	8	9	10	11	12	13
14	15	16	17	18	19	20
21	22	23	24	25	26	27
28						

Last Year
Feb 14th - Valentine's Day
Feb 15th - Presidents' Day

STR#	Name	City, State	Zip	Phone	Rooms	Open Date
62749	Sleep Inn & Suites Hennessey North	Hennessey, OK	73742-1019	(405) 853-2126	50	201308
36764	Baymont Inn & Suites Enid	Enid, OK	73703	(580) 234-6800	58	199806
63401	Country Inn & Suites Enid	Enid, OK	73703	(580) 599-0372	77	201411
63750	Best Western Plus Fairview Inn & Suites	Fairview, OK	73737	(580) 227-2880	52	201601
64464	La Quinta Inns & Suites Enid	Enid, OK	73703	(580) 233-7100	70	201511
68907	Holiday Inn Express & Suites Kingfisher	Kingfisher, OK	73750	(405) 375-3210	77	201911
					384	

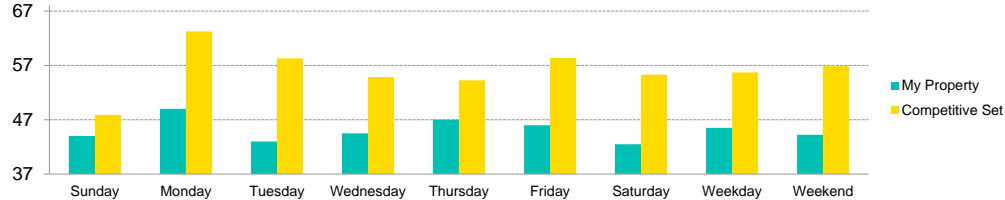
2020												2021												
Mar	Apr	May	Jun	Jul	Aug	Sep	Oct	Nov	Dec	Jan	Feb	Mar	Apr	May	Jun	Jul	Aug	Sep	Oct	Nov	Dec	Jan	Feb	
●	●	●	●	●	●	●	●	●	●	●	●	●	●	●	●	●	●	●	●	●	●	●	●	●
●	●	●	●	●	●	●	●	●	●	●	●	●	●	●	●	●	●	●	●	●	●	●	●	●
●	●	●	●	●	●	●	●	●	●	●	●	●	●	●	●	●	●	●	●	●	●	●	●	●
●	●	●	●	●	●	●	●	●	●	●	●	●	●	●	●	●	●	●	●	●	●	●	●	●
●	●	●	●	●	●	●	●	●	●	●	●	●	●	●	●	●	●	●	●	●	●	●	●	●
●	●	●	●	●	●	●	●	●	●	●	●	●	●	●	●	●	●	●	●	●	●	●	●	●
●	●	●	●	●	●	●	●	●	●	●	●	●	●	●	●	●	●	●	●	●	●	●	●	●

Data received:
☐ = Monthly Only
☒ = Monthly & Daily

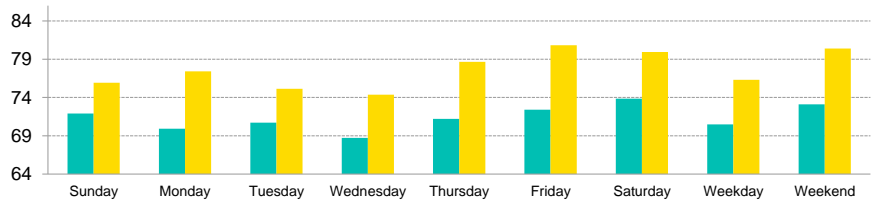
Tab 6 - Day of Week and Weekday/Weekend Report

Sleep Inn & Suites Hennessey North 522 N Main St Hennessey, OK 73742-1019 Phone: (405) 853-2126
STR # 62749 ChainID: OK223 MgtCo: None Owner: None
For the Month of: February 2022 Date Created: March 17, 2022 Monthly Competitive Set Data Excludes Subject Property

Current Month Occupancy



Current Month ADR



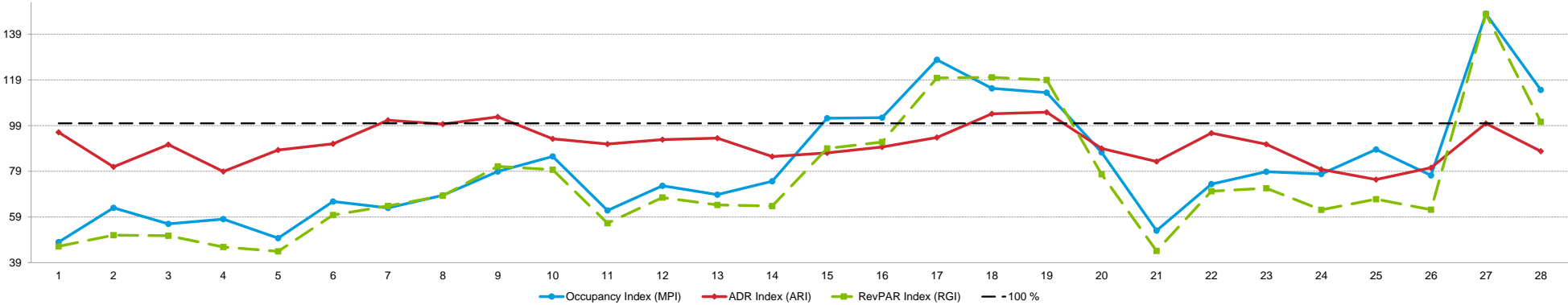
		Occupancy (%)						Average Daily Rate						RevPAR					
		My Property		Competitive Set		Index (MPI)		My Property		Competitive Set		Index (ARI)		My Property		Competitive Set		Index (RGI)	
Day of Week	Time Period	% Chg		% Chg		% Chg		% Chg		% Chg		% Chg		% Chg		% Chg		% Chg	
Sunday	Current Month	44.0	29.4	47.9	50.9	91.9	-14.3	71.91	3.0	75.92	4.3	94.7	-1.3	31.64	33.3	36.37	57.4	87.0	-15.4
	Year To Date	47.8	61.7	44.6	69.7	107.0	-4.7	67.93	1.3	77.38	5.9	87.8	-4.3	32.46	63.7	34.54	79.6	94.0	-8.9
	Running 3 Month	49.4	69.8	41.9	63.1	117.9	4.1	68.99	4.2	77.31	5.2	89.2	-1.0	34.07	76.9	32.39	71.7	105.2	3.1
	Running 12 Month	47.3	60.3	39.6	18.7	119.3	35.0	72.44	0.8	83.39	13.3	86.9	-11.0	34.27	61.6	33.06	34.5	103.7	20.1
Monday	Current Month	49.0	-6.7	63.2	41.8	77.5	-34.2	69.92	6.4	77.41	3.3	90.3	3.0	34.26	-0.7	48.96	46.4	70.0	-32.2
	Year To Date	53.3	17.2	57.2	29.3	93.3	-9.3	71.73	9.8	79.06	2.8	90.7	6.8	38.25	28.7	45.21	32.9	84.6	-3.1
	Running 3 Month	55.8	26.4	54.8	31.1	102.0	-3.6	70.44	8.5	78.44	2.5	89.8	5.9	39.34	37.2	42.96	34.4	91.6	2.1
	Running 12 Month	59.0	52.7	54.1	3.9	109.0	46.9	69.28	-1.0	84.17	10.1	82.3	-10.1	40.89	51.1	45.56	14.4	89.7	32.1
Tuesday	Current Month	43.0	-23.9	58.3	14.6	73.7	-33.6	70.71	2.4	75.13	-0.5	94.1	2.9	30.40	-22.1	43.81	14.0	69.4	-31.6
	Year To Date	48.5	-4.0	56.0	13.8	86.6	-15.6	73.47	10.7	79.57	6.1	92.3	4.3	35.63	6.3	44.58	20.8	79.9	-12.0
	Running 3 Month	50.7	10.5	54.0	17.0	93.9	-5.5	71.33	7.7	78.50	4.4	90.9	3.1	36.14	19.0	42.36	22.1	85.3	-2.6
	Running 12 Month	58.2	35.2	58.6	6.3	99.2	27.2	72.65	2.3	85.08	10.8	85.4	-7.7	42.28	38.3	49.89	17.8	84.7	17.4
Wednesday	Current Month	44.5	-31.5	54.9	12.8	81.1	-39.3	68.72	2.0	74.38	0.3	92.4	1.7	30.58	-30.2	40.81	13.1	74.9	-38.3
	Year To Date	49.3	-8.4	54.1	13.4	91.1	-19.2	71.91	8.1	80.57	7.1	89.2	1.0	35.41	-0.9	43.57	21.4	81.3	-18.4
	Running 3 Month	53.2	8.5	52.4	22.7	101.5	-11.6	71.52	9.0	79.66	5.1	89.8	3.7	38.07	18.2	41.78	29.0	91.1	-8.3
	Running 12 Month	57.3	30.8	58.5	7.0	97.9	22.3	71.45	1.3	85.32	11.7	83.7	-9.3	40.92	32.5	49.89	19.5	82.0	10.9
Thursday	Current Month	47.0	-12.1	54.3	15.4	86.6	-23.9	71.21	5.0	78.66	4.6	90.5	0.4	33.47	-7.7	42.69	20.8	78.4	-23.6
	Year To Date	48.3	4.3	56.1	27.3	86.1	-18.0	70.88	3.9	80.96	6.7	87.5	-2.6	34.20	8.4	45.39	35.8	75.3	-20.2
	Running 3 Month	47.5	6.9	52.5	22.2	90.5	-12.5	70.03	4.5	80.68	6.6	86.8	-2.0	33.29	11.7	42.39	30.3	78.5	-14.3
	Running 12 Month	54.7	34.8	56.6	10.3	96.6	22.2	71.95	1.6	85.22	11.3	84.4	-8.7	39.32	37.0	48.23	22.8	81.5	11.6
Friday	Current Month	46.0	16.5	58.4	25.8	78.8	-7.4	72.41	6.1	80.84	10.4	89.6	-4.0	33.31	23.5	47.20	38.9	70.6	-11.1
	Year To Date	48.5	24.0	55.5	40.4	87.4	-11.7	73.67	7.5	81.63	8.4	90.2	-0.9	35.73	33.3	45.31	52.2	78.9	-12.5
	Running 3 Month	51.4	35.8	54.8	45.2	93.8	-6.5	73.87	9.1	80.74	8.2	91.5	0.8	37.96	48.1	44.22	57.1	85.8	-5.8
	Running 12 Month	55.1	62.1	57.4	26.2	96.0	28.5	74.75	4.1	87.45	14.9	85.5	-9.4	41.20	68.8	50.21	45.0	82.1	16.4
Saturday	Current Month	42.5	26.9	55.3	31.7	76.8	-3.7	73.86	10.7	79.95	10.5	92.4	0.1	31.39	40.4	44.22	45.6	71.0	-3.6
	Year To Date	48.7	28.8	50.1	45.8	97.2	-11.7	72.90	6.2	82.57	13.7	88.3	-6.6	35.48	36.8	41.34	65.8	85.8	-17.5
	Running 3 Month	46.2	26.1	48.2	40.9	95.8	-10.5	73.98	9.2	81.57	11.2	90.7	-1.7	34.14	37.7	39.30	56.6	86.9	-12.1
	Running 12 Month	52.9	61.8	55.4	26.1	95.5	28.2	77.09	7.3	88.33	15.6	87.3	-7.1	40.77	73.6	48.94	45.8	83.3	19.1
Weekday/Weekend																			
Weekday (Sun-Thu)	Current Month	45.5	-13.0	55.7	25.0	81.7	-30.4	70.49	3.9	76.32	2.2	92.3	1.7	32.07	-9.6	42.53	27.8	75.4	-29.2
	Year To Date	49.5	10.6	53.5	27.6	92.5	-13.3	71.14	6.7	79.53	5.5	89.5	1.1	35.20	18.0	42.53	34.6	82.8	-12.3
	Running 3 Month	51.3	20.8	51.1	28.2	100.5	-5.8	70.47	6.8	78.99	4.7	89.2	2.0	36.18	29.0	40.34	34.2	89.7	-3.9
	Running 12 Month	55.3	41.6	53.5	8.6	103.4	30.3	71.50	1.0	84.73	11.3	84.4	-9.2	39.54	43.0	45.33	20.9	87.2	18.3
Weekend (Fri-Sat)	Current Month	44.3	21.2	56.8	28.6	77.8	-5.7	73.11	8.2	80.41	10.5	90.9	-2.1	32.35	31.2	45.71	42.1	70.8	-7.7
	Year To Date	48.6	26.4	52.6	42.5	92.3	-11.3	73.26	6.8	82.10	10.9	89.2	-3.7	35.60	35.0	43.20	58.0	82.4	-14.6
	Running 3 Month	48.8	31.0	51.5	43.1	94.7	-8.5	73.92	9.1	81.13	9.6	91.1	-0.4	36.05	43.0	41.76	56.9	86.3	-8.9
	Running 12 Month	54.0	61.9	56.4	26.2	95.7	28.3	75.89	5.7	87.88	15.2	86.4	-8.3	40.98	71.2	49.57	45.4	82.7	17.7
Total	Current Month	45.1	-5.5	56.1	26.1	80.5	-25.1	71.22	5.1	77.46	4.4	91.9	0.6	32.15	-0.7	43.44	31.8	74.0	-24.6
	Year To Date	49.2	15.0	53.2	31.7	92.5	-12.7	71.75	6.8	80.31	7.1	89.3	-0.3	35.31	22.7	42.72	41.0	82.7	-13.0
	Running 3 Month	50.6	23.5	51.2	32.2	98.9	-6.6	71.43	7.5	79.63	6.1	89.7	1.3	36.14	32.7	40.75	40.2	88.7	-5.3
	Running 12 Month	54.9	46.7	54.3	13.3	101.1	29.6	72.73	2.4	85.66	12.5	84.9	-9.0	39.95	50.2	46.54	27.4	85.8	17.9

2022 © CoStar Group. This STR Report is a publication of STR, LLC and STR Global, Ltd., CoStar Group companies, and is intended solely for use by paid subscribers. The information in the STR Report is provided on an "as is" and "as available" basis and should not be construed as investment, tax, accounting or legal advice. Reproduction or distribution of this STR Report, in whole or part, without written permission is prohibited and subject to legal action. If you have received this report and are NOT a subscriber to this STR Report, please contact us immediately. Source: 2022 STR, LLC / STR Global, Ltd. trading as "STR".

Tab 7 - Daily Data for the Month

Sleep Inn & Suites Hennessey North 522 N Main St Hennessey, OK 73742-1019 Phone: (405) 853-2126
STR # 62749 ChainID: OK223 MgtCo: None Owner: None
For the Month of: February 2022 Date Created: March 17, 2022 Daily Competitive Set Data Excludes Subject Property

Daily Indexes for the Month of February



Occupancy (%)	February																											
	Tu	We	Th	Fr	Sa	Su	Mo	Tu	We	Th	Fr	Sa	Su	Mo	Tu	We	Th	Fr	Sa	Su	Mo	Tu	We	Th	Fr	Sa	Su	Mo
	1	2	3	4	5	6	7	8	9	10	11	12	13	14	15	16	17	18	19	20	21	22	23	24	25	26	27	28
My Property	24.0	30.0	28.0	28.0	28.0	38.0	46.0	48.0	56.0	64.0	50.0	42.0	28.0	40.0	60.0	54.0	62.0	58.0	54.0	40.0	30.0	40.0	38.0	34.0	48.0	46.0	70.0	80.0
Competitive Set	50.0	47.6	50.0	48.2	56.3	57.8	73.1	70.1	71.0	74.9	80.8	57.8	40.7	53.6	58.7	52.7	48.5	50.3	47.6	45.8	56.6	54.5	48.2	43.7	54.2	59.6	47.3	69.8
Index (MPI)	48.0	63.0	56.0	58.1	49.7	65.8	63.0	68.5	78.9	85.5	61.9	72.7	68.8	74.6	102.2	102.5	127.8	115.3	113.4	87.3	53.0	73.4	78.8	77.8	88.6	77.2	148.0	114.7

% Chg																												
My Property	-66.7	-58.3	-41.7	-12.5	7.7	0.0	15.0	60.0	0.0	190.9	150.0	61.5	-6.7	0.0	50.0	17.4	3.3	26.1	8.0	-13.0	-53.1	-52.4	-55.8	-59.5	-20.0	43.8	218.2	14.3
Competitive Set	-6.7	-12.2	-4.0	11.0	51.6	96.9	61.6	50.0	78.2	131.5	154.7	96.9	44.7	54.3	32.4	44.3	29.6	19.1	5.3	33.0	11.8	-7.6	-24.8	-33.9	-20.6	5.9	35.0	37.9
Index (MPI)	-64.3	-52.6	-39.2	-21.2	-29.0	-49.2	-28.8	6.7	-43.9	25.7	-1.9	-18.0	-35.5	-35.2	13.3	-18.6	-20.3	5.8	2.6	-34.6	-58.1	-48.5	-41.3	-38.7	0.8	35.8	135.6	-17.1

ADR	February																											
	1	2	3	4	5	6	7	8	9	10	11	12	13	14	15	16	17	18	19	20	21	22	23	24	25	26	27	28
My Property	72.22	61.99	71.27	60.66	66.89	66.10	77.52	74.41	77.16	72.92	73.55	79.53	72.74	64.82	67.99	66.08	73.51	84.64	80.31	69.68	63.94	69.45	65.36	63.74	63.28	65.35	76.00	70.34
Competitive Set	75.15	76.56	78.58	76.88	75.73	72.62	76.47	74.66	75.04	78.23	80.86	85.63	77.80	75.85	78.08	73.74	78.37	81.26	76.57	78.30	76.76	72.55	71.95	79.82	83.93	81.12	76.04	80.11
Index (ARI)	96.1	81.0	90.7	78.9	88.3	91.0	101.4	99.7	102.8	93.2	91.0	92.9	93.5	85.5	87.1	89.6	93.8	104.2	104.9	89.0	83.3	95.7	90.8	79.9	75.4	80.6	99.9	87.8

% Chg																												
My Property	7.0	-0.2	10.2	-12.9	-2.1	0.8	19.1	6.3	8.1	10.2	8.6	12.6	-5.7	-6.1	-18.8	-3.5	4.4	25.7	27.4	0.6	-2.6	10.0	-4.8	-6.4	-7.5	-4.0	11.1	12.8
Competitive Set	0.3	1.3	5.4	8.1	9.7	0.2	3.2	3.5	7.1	13.1	16.9	28.8	10.3	0.7	2.2	0.7	4.5	15.4	6.6	16.0	-1.2	-7.2	-5.4	1.4	7.4	4.1	-5.0	-2.2
Index (ARI)	6.7	-1.4	4.6	-19.4	-10.8	0.6	15.4	2.7	0.9	-2.5	-7.1	-12.6	-14.5	-6.8	-20.6	-4.2	-0.1	8.9	19.5	-13.3	-1.4	18.5	0.7	-7.7	-13.9	-7.8	17.0	15.4

RevPAR	February																											
	1	2	3	4	5	6	7	8	9	10	11	12	13	14	15	16	17	18	19	20	21	22	23	24	25	26	27	28
My Property	17.33	18.60	19.96	16.99	18.73	25.12	35.66	35.71	43.21	46.67	36.78	33.40	20.37	25.93	40.79	35.68	45.58	49.09	43.37	27.87	19.18	27.78	24.84	21.67	30.37	30.06	53.20	56.27
Competitive Set	37.57	36.44	39.29	37.06	42.63	41.96	55.87	52.31	53.25	58.56	65.37	49.48	31.68	40.65	45.82	38.85	38.01	40.87	36.45	35.87	43.44	39.53	34.68	34.89	45.48	48.33	35.97	55.88
Index (RGI)	46.1	51.0	50.8	45.8	43.9	59.9	63.8	68.3	81.2	79.7	56.3	67.5	64.3	63.8	89.0	91.8	119.9	120.1	119.0	77.7	44.2	70.3	71.6	62.1	66.8	62.2	147.9	100.7

% Chg																												
My Property	-64.3	-58.4	-35.7	-23.8	5.5	0.8	37.0	70.1	8.1	220.6	171.5	81.9	-12.0	-6.1	21.8	13.3	7.9	58.5	37.6	-12.5	-54.3	-47.6	-57.9	-62.1	-26.0	38.0	253.5	28.9
Competitive Set	-6.4	-11.0	1.1	20.1	66.4	97.3	66.8	55.2	90.8	161.7	197.8	153.6	59.6	55.4	35.4	45.3	35.4	37.5	12.2	54.3	10.4	-14.2	-28.9	-33.0	-14.7	10.2	28.3	34.8
Index (RGI)	-61.9	-53.3	-36.4	-36.5	-36.6	-48.9	-17.9	9.6	-43.4	22.5	-8.9	-28.3	-44.8	-39.6	-10.1	-22.1	-20.3	15.3	22.6	-43.3	-58.7	-38.9	-40.8	-43.5	-13.2	25.3	175.6	-4.3

2022 © CoStar Group. This STR Report is a publication of STR, LLC and STR Global, Ltd. CoStar Group companies, and is intended solely for use by paid subscribers. The information in the STR Report is provided on an "as is" and "as available" basis and should not be construed as investment, tax, accounting or legal advice. Reproduction or distribution of this STR Report, in whole or part, without written permission is prohibited and subject to legal action. If you have received this report and are NOT a subscriber to this STR Report, please contact us immediately. Source: 2022 STR, LLC / STR Global, Ltd. trading as "STR".



How can we assist you?

Glossary:

For all STR definitions, please click here or visit www.str.com/data-insights/resources/glossary

Frequently Asked Questions (FAQ):

For all STR FAQs, please click here or visit www.str.com/data-insights/resources/FAQ

For additional support, please [contact](#) your regional office.

For the latest in industry news, visit HotelNewsNow.com.

To learn more about the Hotel Data Conference, visit HotelDataConference.com.