

STR # 62749 / Created September 16, 2023

Monthly STAR Report : Sleep Inn & Suites Hennessey North

For the Month of: August 2023

Currency: US Dollar / Competitive Set Data Excludes Subject Property



Table Of Contents	1
Monthly Performance at a Glance	2
STAR Summary	3
Competitive Set Report	4
Response Report	5
Day of Week & Weekday/Weekend	6
Daily Data for the Month	7
Help	8

Corporate North American Headquarters
T: +1 (615) 824 8664
support@str.com www.str.com

International Headquarters
T: +44 (0) 207 922 1930
hotelinfo@str.com www.str.com

2023 © CoStar Group. This STR Report is a publication of STR, LLC and STR Global, Ltd., CoStar Group companies, and is intended solely for use by paid subscribers. The information in the STR Report is provided on an "as is" and "as available" basis and should not be construed as investment, tax, accounting or legal advice. Reproduction or distribution of this STR Report, in whole or part, without written permission is prohibited and subject to legal action. If you have received this report and are NOT a subscriber to this STR Report, please contact us immediately. Source: 2023 STR, LLC / STR Global, Ltd. trading as "STR".

Tab 2 - Monthly Performance at a Glance - My Property vs. Competitive Set

Sleep Inn & Suites Hennessey North 522 N Main St Hennessey, OK 73742-1019 Phone: (405) 853-2126

STR # 62749 ChainID: OK223 MgtCo: None Owner: None

For the Month of: August 2023 Date Created: September 16, 2023 Monthly Competitive Set Data Excludes Subject Property

August 2023

	Occupancy (%)			ADR			RevPAR		
	My Prop	Comp Set	Index (MPI)	My Prop	Comp Set	Index (ARI)	My Prop	Comp Set	Index (RGI)
Current Month	49.1	47.7	102.9	60.87	81.88	74.3	29.88	39.08	76.5
Year To Date	46.7	54.2	86.2	65.04	86.11	75.5	30.36	46.65	65.1
Running 3 Month	44.9	53.7	83.7	59.93	84.21	71.2	26.93	45.24	59.5
Running 12 Month	44.6	53.5	83.4	67.30	85.60	78.6	30.05	45.80	65.6

August 2023 vs. 2022 Percent Change (%)

	Occupancy			ADR			RevPAR		
	My Prop	Comp Set	Index (MPI)	My Prop	Comp Set	Index (ARI)	My Prop	Comp Set	Index (RGI)
Current Month	-15.8	-3.8	-12.5	-14.7	-4.9	-10.3	-28.2	-8.5	-21.5
Year To Date	-23.6	-3.7	-20.6	-10.7	1.8	-12.3	-31.7	-2.0	-30.4
Running 3 Month	-34.9	-9.1	-28.4	-16.4	-1.2	-15.4	-45.6	-10.2	-39.4
Running 12 Month	-24.5	-2.4	-22.6	-7.0	2.9	-9.6	-29.8	0.4	-30.1

Tab 3 - STAR Summary - My Property vs. Comp Set and Industry Segments

Sleep Inn & Suites Hennessey North 522 N Main St Hennessey, OK 73742-1019 Phone: (405) 853-2126

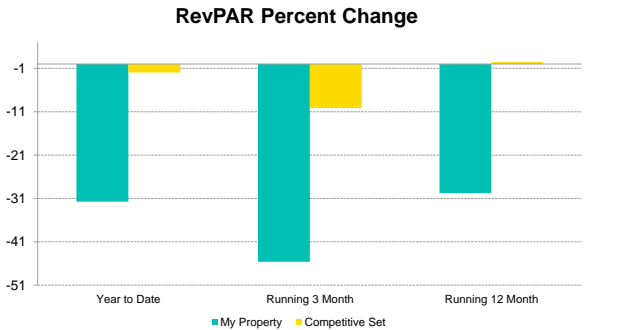
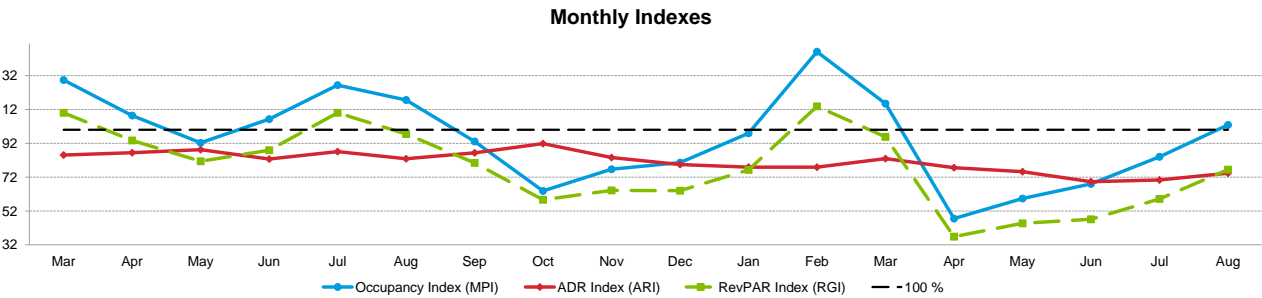
STR # 62749 ChainID: OK223 MgtCo: None Owner: None

For the Month of: August 2023 Date Created: September 16, 2023 Monthly Competitive Set Data Excludes Subject Property

	Occupancy (%)								Supply			
	Current Month	% Chg	Year to Date	% Chg	Running 3 Month	% Chg	Running 12 Month	% Chg	Month % Chg	YTD % Chg	Run 3 Mon % Chg	Run 12 Mon % Chg
Sleep Inn & Suites Hennessey North	49.1	-15.8	46.7	-23.6	44.9	-34.9	44.6	-24.5	0.0	-0.8	-1.1	-0.5
Market: Oklahoma Area	48.7	-5.6	50.8	-1.9	52.6	-2.5	50.4	-1.2	-0.9	-1.4	-1.0	-1.3
Market Class: Midscale Class	54.4	-1.3	54.4	-0.6	57.0	-1.3	54.0	-0.5	1.6	-0.4	1.6	-0.8
Submarket: Oklahoma West Area	47.9	-1.9	48.6	-1.4	51.0	-0.2	47.8	-2.4	-1.8	-1.1	-1.8	-0.2
Submarket Scale: Midscale Chains	61.5	2.5	60.4	-0.5	64.4	3.3	59.4	-0.7	0.0	1.5	0.0	1.8
Competitive Set: Competitors	47.7	-3.8	54.2	-3.7	53.7	-9.1	53.5	-2.4	0.0	0.0	0.0	0.0
	Average Daily Rate								Demand			
	Current Month	% Chg	Year to Date	% Chg	Running 3 Month	% Chg	Running 12 Month	% Chg	Month % Chg	YTD % Chg	Run 3 Mon % Chg	Run 12 Mon % Chg
Sleep Inn & Suites Hennessey North	60.87	-14.7	65.04	-10.7	59.93	-16.4	67.30	-7.0	-15.8	-24.2	-35.7	-24.9
Market: Oklahoma Area	85.55	5.8	84.50	4.6	86.63	5.3	84.32	5.1	-6.4	-3.3	-3.5	-2.5
Market Class: Midscale Class	87.37	8.0	82.77	4.1	85.19	4.5	82.57	4.7	0.4	-1.0	0.3	-1.3
Submarket: Oklahoma West Area	82.21	6.7	80.23	3.9	82.58	5.6	79.73	3.7	-3.6	-2.4	-1.9	-2.6
Submarket Scale: Midscale Chains	95.71	3.5	94.91	3.1	97.08	3.7	94.47	2.6	2.5	0.9	3.3	1.0
Competitive Set: Competitors	81.88	-4.9	86.11	1.8	84.21	-1.2	85.60	2.9	-3.8	-3.7	-9.1	-2.4
	RevPAR								Revenue			
	Current Month	% Chg	Year to Date	% Chg	Running 3 Month	% Chg	Running 12 Month	% Chg	Month % Chg	YTD % Chg	Run 3 Mon % Chg	Run 12 Mon % Chg
Sleep Inn & Suites Hennessey North	29.88	-28.2	30.36	-31.7	26.93	-45.6	30.05	-29.8	-28.2	-32.3	-46.2	-30.2
Market: Oklahoma Area	41.66	-0.2	42.96	2.6	45.57	2.6	42.48	3.8	-1.0	1.1	1.6	2.4
Market Class: Midscale Class	47.53	6.6	44.99	3.5	48.58	3.1	44.57	4.2	8.4	3.0	4.8	3.3
Submarket: Oklahoma West Area	39.36	4.7	39.01	2.5	42.08	5.4	38.11	1.2	2.9	1.4	3.6	1.0
Submarket Scale: Midscale Chains	58.84	6.1	57.33	2.5	62.56	7.1	56.16	1.9	6.1	4.0	7.1	3.7
Competitive Set: Competitors	39.08	-8.5	46.65	-2.0	45.24	-10.2	45.80	0.4	-8.5	-2.0	-10.2	0.4
	Census/Sample - Properties & Rooms											
	Census		Sample		Sample %							
	Properties		Rooms	Properties		Rooms	Rooms					
Market: Oklahoma Area	513		31383	243		17442	55.6					
Market Class: Midscale Class	61		4509	43		3299	73.2					
Submarket: Oklahoma West Area	184		10549	90		6702	63.5					
Submarket Scale: Midscale Chains	52		3937	52		3937	100.0					
Competitive Set: Competitors	5		334	5		334	100.0					

Tab 4 - Competitive Set Report

Sleep Inn & Suites Hennessey North 522 N Main St Hennessey, OK 73742-1019 Phone: (405) 853-2126
STR # 62749 ChainID: OK223 MgtCo: None Owner: None
For the Month of: August 2023 Date Created: September 16, 2023 Monthly Competitive Set Data Excludes Subject Property



Occupancy (%)	2022										2023							
	Mar	Apr	May	Jun	Jul	Aug	Sep	Oct	Nov	Dec	Jan	Feb	Mar	Apr	May	Jun	Jul	Aug
My Property	72.2	53.0	56.5	67.1	81.8	58.3	50.7	39.2	38.9	34.1	41.9	68.6	58.9	29.3	41.1	42.0	43.6	49.1
Competitive Set	55.8	48.9	61.2	63.1	64.7	49.6	54.4	61.4	50.7	42.3	42.8	47.0	51.0	61.7	69.2	61.8	51.9	47.7
Index (MPI)	129.4	108.4	92.3	106.3	126.3	117.6	93.2	63.8	76.7	80.6	97.9	146.1	115.5	47.5	59.4	67.9	84.0	102.9
Rank	2 of 6	3 of 6	4 of 6	3 of 6	1 of 6	2 of 6	5 of 6	6 of 6	5 of 6	5 of 6	4 of 6	1 of 6	2 of 6	6 of 6	6 of 6	6 of 6	5 of 6	4 of 6

% Chg																		
My Property	45.5	-5.8	-7.3	-12.8	64.9	24.5	-16.2	-40.2	-6.0	-36.0	-20.9	52.1	-18.4	-44.7	-27.1	-37.4	-46.7	-15.8
Competitive Set	2.1	-7.9	-1.3	-13.3	26.5	12.5	5.4	3.4	2.4	-10.7	-15.5	-16.2	-8.6	26.3	13.2	-2.0	-19.9	-3.8
Index (MPI)	42.5	2.3	-6.1	0.6	30.3	10.7	-20.5	-42.1	-8.2	-28.3	-6.4	81.4	-10.8	-56.2	-35.6	-36.1	-33.5	-12.5
Rank	1 of 6	2 of 6	4 of 6	3 of 6	2 of 6	2 of 6	6 of 6	6 of 6	6 of 6	6 of 6	4 of 6	1 of 6	5 of 6	6 of 6	6 of 6	6 of 6	6 of 6	6 of 6

Year To Date			Running 3 Month			Running 12 Month		
2021	2022	2023	2021	2022	2023	2021	2022	2023
53.2	61.1	46.7	57.6	69.1	44.9	46.4	59.1	44.6
52.4	56.2	54.2	55.8	59.1	53.7	52.2	54.8	53.5
101.7	108.6	86.2	103.1	116.9	83.7	88.8	107.8	83.4
4 of 6	2 of 6	5 of 6	3 of 6	2 of 6	5 of 6	4 of 6	3 of 6	5 of 6

ADR	2022										2023							
	Mar	Apr	May	Jun	Jul	Aug	Sep	Oct	Nov	Dec	Jan	Feb	Mar	Apr	May	Jun	Jul	Aug
My Property	72.93	74.67	77.22	74.34	69.71	71.36	73.70	76.31	70.62	68.11	68.40	66.93	68.27	66.47	69.74	60.38	58.39	60.87
Competitive Set	85.77	86.38	87.53	89.92	80.07	86.10	85.32	83.11	84.49	85.74	87.81	85.91	82.31	85.70	92.70	87.11	83.00	81.88
Index (ARI)	85.0	86.4	88.2	82.7	87.1	82.9	86.4	91.8	83.6	79.4	77.9	77.9	82.9	77.6	75.2	69.3	70.4	74.3
Rank	4 of 6	4 of 6	5 of 6	5 of 6	4 of 6	5 of 6	4 of 6	4 of 6	5 of 6	5 of 6	4 of 6	5 of 6	4 of 6	5 of 6	5 of 6	5 of 6	5 of 6	5 of 6

% Chg																		
My Property	8.4	4.5	-1.9	-3.4	-7.6	1.0	3.7	7.5	-3.5	-3.9	-5.2	-6.0	-6.4	-11.0	-9.7	-18.8	-16.2	-14.7
Competitive Set	2.9	4.7	-2.4	-13.1	-14.4	-1.0	3.8	6.4	2.5	9.7	5.6	10.9	-4.0	-0.8	5.9	-3.1	3.6	-4.9
Index (ARI)	5.3	-0.2	0.5	11.1	7.8	2.0	-0.1	1.0	-5.8	-12.4	-10.2	-15.3	-2.4	-10.3	-14.7	-16.2	-19.2	-10.3
Rank	2 of 6	3 of 6	2 of 6	2 of 6	4 of 6	2 of 6	4 of 6	1 of 6	5 of 6	6 of 6	6 of 6	6 of 6	4 of 6	5 of 6	6 of 6	6 of 6	6 of 6	6 of 6

17.2	14.7	-23.6	65.6	20.0	-34.9	-6.3	27.5	-24.5
8.7	7.4	-3.7	7.0	5.9	-9.1	6.2	5.0	-2.4
7.9	6.8	-20.6	54.7	13.3	-28.4	-11.7	21.4	-22.6
2 of 6	2 of 6	6 of 6	1 of 6	1 of 6	6 of 6	6 of 6	1 of 6	6 of 6

RevPAR	2022										2023							
	Mar	Apr	May	Jun	Jul	Aug	Sep	Oct	Nov	Dec	Jan	Feb	Mar	Apr	May	Jun	Jul	Aug
My Property	52.65	39.58	43.59	49.86	57.03	41.62	37.34	29.88	27.45	23.20	28.64	45.94	40.22	19.50	28.69	25.36	25.46	29.88
Competitive Set	47.85	42.23	53.54	56.73	51.85	42.69	46.41	51.00	42.80	36.26	37.55	40.37	41.98	52.91	64.19	53.85	43.06	39.08
Index (RGI)	110.0	93.7	81.4	87.9	110.0	97.5	80.5	58.6	64.1	64.0	76.3	113.8	95.8	36.9	44.7	47.1	59.1	76.5
Rank	3 of 6	4 of 6	4 of 6	4 of 6	3 of 6	3 of 6	5 of 6	5 of 6	5 of 6	5 of 6	4 of 6	3 of 6	4 of 6	6 of 6	6 of 6	5 of 6	5 of 6	5 of 6

% Chg																		
My Property	57.7	-1.6	-9.1	-15.8	52.3	25.7	-13.1	-35.7	-9.2	-38.5	-25.0	42.9	-23.6	-50.7	-34.2	-49.1	-55.4	-28.2
Competitive Set	5.1	-3.6	-3.7	-24.7	8.3	11.3	9.4	10.0	5.0	-2.0	-10.7	-7.1	-12.3	25.3	19.9	-5.1	-16.9	-8.5
Index (RGI)	50.1	2.1	-5.6	11.7	40.5	12.9	-20.5	-41.6	-13.5	-37.2	-15.9	53.8	-12.9	-60.7	-45.1	-46.4	-46.2	-21.5
Rank	1 of 6	3 of 6	3 of 6	3 of 6	1 of 6	2 of 6	6 of 6	6 of 6	6 of 6	6 of 6	5 of 6	1 of 6	5 of 6	6 of 6	6 of 6	6 of 6	6 of 6	6 of 6

Year To Date			Running 3 Month			Running 12 Month		
2021	2022	2023	2021	2022	2023	2021	2022	2023
72.57	72.84	65.04	74.81	71.65	59.93	72.14	72.39	67.30
87.75	84.60	86.11	96.00	85.21	84.21	84.06	83.19	85.60
82.7	86.1	75.5	77.9	84.1	71.2	85.8	87.0	78.6
6 of 6	4 of 6	5 of 6	6 of 6	4 of 6	5 of 6	5 of 6	4 of 6	5 of 6

-0.9	0.4	-10.7	0.1	-4.2	-16.4	-6.5	0.3	-7.0
13.6	-3.6	1.8	24.2	-11.2	-1.2	7.5	-1.0	2.9
-12.8	4.1	-12.3	-19.4	7.9	-15.4	-13.0	1.4	-9.6
6 of 6	3 of 6	6 of 6	6 of 6	4 of 6	6 of 6	6 of 6	3 of 6	6 of 6

Tab 5 - Response Report

Sleep Inn & Suites Hennessey North 522 N Main St Hennessey, OK 73742-1019 Phone: (405) 853-2126
STR # 62749 ChainID: OK223 MgtCo: None Owner: None
For the Month of: August 2023 Date Created: September 16, 2023

This Year

August 2023 (This Year)						
Sun	Mon	Tue	Wed	Thu	Fri	Sat
		1	2	3	4	5
6	7	8	9	10	11	12
13	14	15	16	17	18	19
20	21	22	23	24	25	26
27	28	29	30	31		

August 2022 (Last Year)						
Sun	Mon	Tue	Wed	Thu	Fri	Sat
	1	2	3	4	5	6
7	8	9	10	11	12	13
14	15	16	17	18	19	20
21	22	23	24	25	26	27
28	29	30	31			

Last Year

STR#	Name	City, State	Zip	Phone	Rooms	Open Date
62749	Sleep Inn & Suites Hennessey North	Hennessey, OK	73742-1019	(405) 853-2126	50	201308
36764	Baymont Inn & Suites Enid	Enid, OK	73703	(580) 234-6800	58	199806
63401	Country Inn & Suites Enid	Enid, OK	73703	(580) 599-0372	77	201411
63750	Best Western Plus Fairview Inn & Suites	Fairview, OK	73737	(580) 227-2880	52	201601
64464	La Quinta Inns & Suites Enid	Enid, OK	73703	(580) 233-7100	70	201511
68907	Holiday Inn Express & Suites Kingfisher	Kingfisher, OK	73750	(405) 375-3210	77	201911
					384	

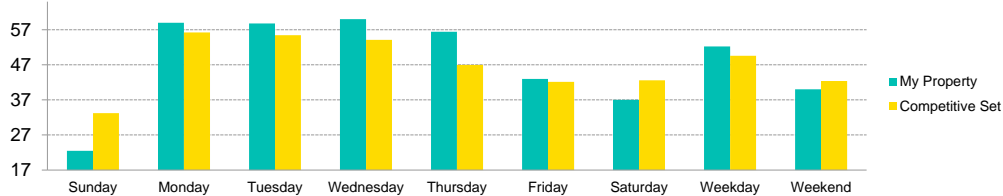
2021				2022												2023							
Sep	Oct	Nov	Dec	Jan	Feb	Mar	Apr	May	Jun	Jul	Aug	Sep	Oct	Nov	Dec	Jan	Feb	Mar	Apr	May	Jun	Jul	Aug

Data received:
☐ = Monthly Only
☒ = Monthly & Daily

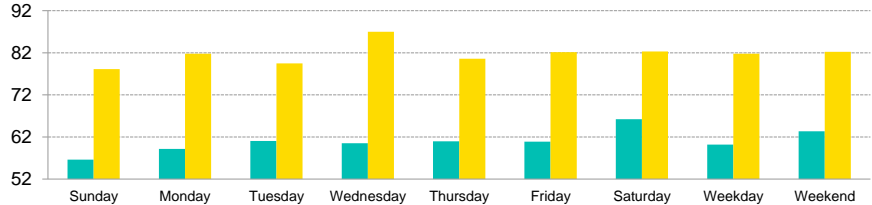
Tab 6 - Day of Week and Weekday/Weekend Report

Sleep Inn & Suites Hennessey North 522 N Main St Hennessey, OK 73742-1019 Phone: (405) 853-2126
STR # 62749 ChainID: OK223 MgtCo: None Owner: None
For the Month of: August 2023 Date Created: September 16, 2023 Monthly Competitive Set Data Excludes Subject Property

Current Month Occupancy



Current Month ADR

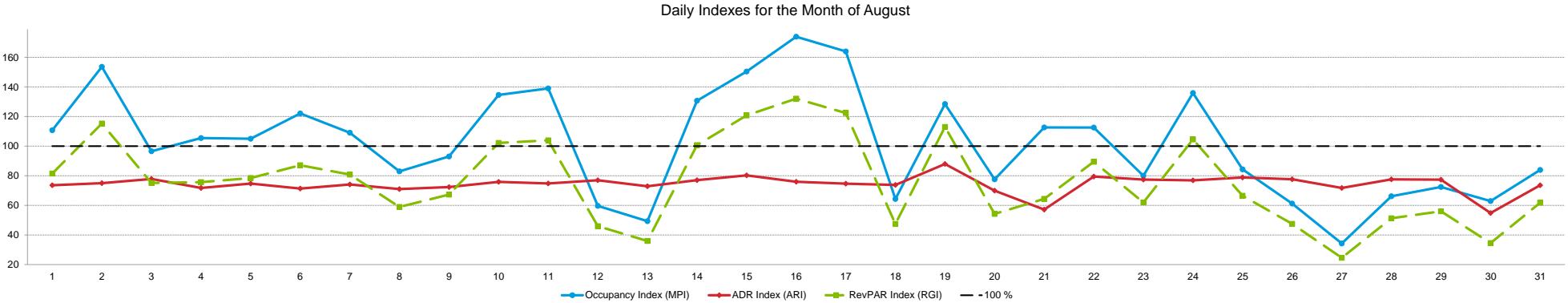


		Occupancy (%)						Average Daily Rate						RevPAR					
Day of Week	Time Period	My Property		Competitive Set		Index (MPI)		My Property		Competitive Set		Index (ARI)		My Property		Competitive Set		Index (RGI)	
			% Chg		% Chg		% Chg		% Chg		% Chg		% Chg		% Chg		% Chg		% Chg
Sunday	Current Month	22.5	-51.6	33.2	-9.9	67.7	-46.3	56.61	-18.1	78.11	-6.6	72.5	-12.3	12.74	-60.3	25.96	-15.9	49.1	-52.9
	Year To Date	36.1	-30.8	38.0	-13.7	95.0	-19.8	64.37	-8.1	84.65	2.9	76.0	-10.7	23.21	-36.4	32.13	-11.2	72.2	-28.4
	Running 3 Month	31.1	-48.1	37.6	-17.1	82.7	-37.4	57.80	-16.4	80.98	-1.5	71.4	-15.2	17.96	-56.6	30.42	-18.3	59.1	-46.9
	Running 12 Month	35.3	-30.7	37.6	-9.5	93.9	-23.4	66.45	-5.5	83.97	3.7	79.1	-8.9	23.48	-34.5	31.58	-6.1	74.3	-30.2
Monday	Current Month	59.0	-2.3	56.2	6.4	105.0	-8.2	59.18	-16.4	81.77	-4.4	72.4	-12.6	34.92	-18.4	45.96	1.8	76.0	-19.8
	Year To Date	48.5	-21.4	56.3	-1.4	86.2	-20.3	62.67	-12.7	84.33	1.3	74.3	-13.8	30.40	-31.4	47.45	-0.1	64.1	-31.3
	Running 3 Month	50.6	-27.5	56.2	-5.6	90.0	-23.3	57.00	-19.8	82.26	-1.9	69.3	-18.2	28.85	-41.9	46.26	-7.4	62.4	-37.2
	Running 12 Month	45.4	-24.9	55.3	-0.5	82.1	-24.6	65.81	-6.6	83.53	1.8	78.8	-8.2	29.87	-29.9	46.17	1.3	64.7	-30.8
Tuesday	Current Month	58.8	-5.2	55.4	5.9	106.0	-10.5	61.07	-13.1	79.46	-6.8	76.9	-6.7	35.91	-17.5	44.06	-1.2	81.5	-16.5
	Year To Date	49.9	-21.8	59.8	1.0	83.5	-22.5	64.42	-10.9	84.94	1.4	75.8	-12.1	32.17	-30.3	50.80	2.4	63.3	-31.9
	Running 3 Month	51.8	-28.9	58.8	-6.5	88.2	-24.0	59.92	-15.5	82.67	-2.0	72.5	-13.7	31.06	-39.9	48.59	-8.4	63.9	-34.4
	Running 12 Month	47.4	-23.7	59.1	1.6	80.2	-25.0	66.54	-7.3	83.67	1.5	79.5	-8.6	31.55	-29.3	49.44	3.1	63.8	-31.4
Wednesday	Current Month	60.0	0.0	54.1	-6.1	110.8	6.5	60.52	-14.0	87.00	-0.8	69.6	-13.4	36.31	-14.0	47.09	-6.8	77.1	-7.7
	Year To Date	48.9	-24.5	60.2	-0.4	81.2	-24.2	63.40	-12.1	86.60	1.8	73.2	-13.6	30.97	-33.7	52.14	1.4	59.4	-34.6
	Running 3 Month	49.1	-33.8	59.1	-10.9	83.0	-25.7	56.52	-21.2	84.89	-3.1	66.6	-18.7	27.74	-47.8	50.21	-13.7	55.3	-39.5
	Running 12 Month	46.7	-24.8	59.5	0.9	78.5	-25.4	66.30	-7.1	85.85	2.8	77.2	-9.6	30.98	-30.1	51.09	3.7	60.6	-32.6
Thursday	Current Month	56.4	-6.8	46.9	-15.1	120.1	9.8	60.98	-11.1	80.60	-7.3	75.7	-4.1	34.39	-17.1	37.84	-21.3	90.9	5.3
	Year To Date	46.3	-26.2	57.4	-3.5	80.6	-23.5	63.89	-11.9	85.48	1.3	74.7	-13.1	29.57	-35.0	49.08	-2.2	60.3	-33.5
	Running 3 Month	47.1	-34.7	57.9	-10.6	81.4	-26.9	58.55	-18.6	83.97	-1.9	69.7	-17.0	27.60	-46.8	48.63	-12.3	56.8	-39.3
	Running 12 Month	44.5	-25.1	56.6	-1.6	78.7	-23.9	65.99	-8.3	84.86	2.3	77.8	-10.4	29.38	-31.4	48.03	0.6	61.2	-31.8
Friday	Current Month	43.0	-21.1	42.1	-4.6	102.0	-17.3	60.88	-17.2	82.15	-1.3	74.1	-16.1	26.18	-34.6	34.62	-5.8	75.6	-30.6
	Year To Date	48.1	-20.4	55.6	-4.2	86.5	-16.9	67.98	-8.7	88.65	2.7	76.7	-11.1	32.71	-27.3	49.31	-1.6	66.3	-26.2
	Running 3 Month	41.2	-36.8	53.5	-6.1	77.0	-32.7	63.80	-11.3	87.68	3.4	72.8	-14.2	26.31	-43.9	46.95	-2.9	56.0	-42.3
	Running 12 Month	46.1	-22.6	55.0	-3.9	83.8	-19.4	69.38	-6.6	88.88	4.7	78.1	-10.8	31.97	-27.7	48.84	0.6	65.5	-28.1
Saturday	Current Month	37.0	-40.8	42.6	-5.2	86.9	-37.6	66.21	-14.1	82.31	-7.0	80.4	-7.6	24.50	-49.2	35.05	-11.8	69.9	-42.3
	Year To Date	48.9	-21.0	51.9	-6.5	94.3	-15.5	68.54	-10.2	88.05	1.4	77.8	-11.5	33.50	-29.1	45.66	-5.3	73.4	-25.2
	Running 3 Month	44.0	-36.3	52.7	-8.0	83.5	-30.8	66.55	-10.8	86.04	-0.8	77.3	-10.1	29.28	-43.2	45.34	-8.7	64.6	-37.7
	Running 12 Month	46.9	-20.5	51.4	-5.9	91.3	-15.5	70.36	-7.9	88.28	3.8	79.7	-11.3	33.02	-26.7	45.38	-2.2	72.7	-25.0
Weekday/Weekend																			
Weekday (Sun-Thu)	Current Month	52.3	-10.3	49.6	-3.6	105.4	-7.0	60.21	-13.9	81.78	-4.9	73.6	-9.5	31.46	-22.8	40.55	-8.3	77.6	-15.8
	Year To Date	46.0	-24.7	54.3	-3.0	84.6	-22.3	63.71	-11.3	85.26	1.7	74.7	-12.8	29.28	-33.2	46.32	-1.4	63.2	-32.2
	Running 3 Month	45.9	-34.3	54.0	-9.8	85.0	-27.1	57.96	-18.4	83.13	-2.2	69.7	-16.6	26.59	-46.4	44.88	-11.8	59.2	-39.2
	Running 12 Month	43.9	-25.6	53.6	-1.3	81.9	-24.6	66.21	-7.0	84.42	2.3	78.4	-9.1	29.06	-30.9	45.27	0.9	64.2	-31.5
Weekend (Fri-Sat)	Current Month	40.0	-31.6	42.4	-4.9	94.4	-28.1	63.34	-16.0	82.23	-4.3	77.0	-12.2	25.34	-42.6	34.84	-9.0	72.7	-36.9
	Year To Date	48.5	-20.7	53.7	-5.3	90.3	-16.3	68.26	-9.5	88.36	2.1	77.3	-11.3	33.11	-28.3	47.48	-3.4	69.7	-25.8
	Running 3 Month	42.6	-36.5	53.1	-7.0	80.2	-31.7	65.22	-11.0	86.87	1.3	75.1	-12.1	27.79	-43.5	46.15	-5.8	60.2	-40.0
	Running 12 Month	46.5	-21.5	53.2	-4.8	87.4	-17.5	69.88	-7.2	88.59	4.3	78.9	-11.0	32.49	-27.2	47.11	-0.8	69.0	-26.6
Total	Current Month	49.1	-15.8	47.7	-3.8	102.9	-12.5	60.87	-14.7	81.88	-4.9	74.3	-10.3	29.88	-28.2	39.08	-8.5	76.5	-21.5
	Year To Date	46.7	-23.6	54.2	-3.7	86.2	-20.6	65.04	-10.7	86.11	1.8	75.5	-12.3	30.36	-31.7	46.65	-2.0	65.1	-30.4
	Running 3 Month	44.9	-34.9	53.7	-9.1	83.7	-28.4	59.93	-16.4	84.21	-1.2	71.2	-15.4	26.93	-45.6	45.24	-10.2	59.5	-39.4
	Running 12 Month	44.6	-24.5	53.5	-2.4	83.4	-22.6	67.30	-7.0	85.60	2.9	78.6	-9.6	30.05	-29.8	45.80	0.4	65.6	-30.1

2023 © CoStar Group. This STR Report is a publication of STR, LLC and STR Global, Ltd., CoStar Group companies, and is intended solely for use by paid subscribers. The information in the STR Report is provided on an "as is" and "as available" basis and should not be construed as investment, tax, accounting or legal advice. Reproduction or distribution of this STR Report, in whole or part, without written permission is prohibited and subject to legal action. If you have received this report and are NOT a subscriber to this STR Report, please contact us immediately. Source: 2023 STR, LLC / STR Global, Ltd. trading as "STR".

Tab 7 - Daily Data for the Month

Sleep Inn & Suites Hennessey North 522 N Main St Hennessey, OK 73742-1019 Phone: (405) 853-2126
STR # 62749 ChainID: OK223 MgtCo: None Owner: None
For the Month of: August 2023 Date Created: September 16, 2023 Daily Competitive Set Data Excludes Subject Property



Occupancy (%)	Tu	We	Th	Fr	Sa	Su	Mo	Tu	We	Th	Fr	Sa	Su	Mo	Tu	We	Th	Fr	Sa	Su	Mo	Tu	We	Th	Fr	Sa	Su	Mo	Tu	We	Th
	August																														
	1	2	3	4	5	6	7	8	9	10	11	12	13	14	15	16	17	18	19	20	21	22	23	24	25	26	27	28	29	30	31
My Property	62.0	86.0	48.0	48.0	44.0	34.0	48.0	40.0	44.0	54.0	72.0	30.0	18.0	90.0	86.0	88.0	82.0	26.0	50.0	26.0	58.0	62.0	40.0	48.0	26.0	24.0	12.0	40.0	44.0	42.0	50.0
Competitive Set	56.0	56.0	49.7	45.5	41.9	27.8	44.0	48.2	47.3	40.1	51.8	50.3	36.5	68.9	57.2	50.6	50.0	40.4	38.9	33.5	51.5	55.1	50.0	35.3	30.8	39.2	35.0	60.5	60.8	66.8	59.6
Index (MPI)	110.7	153.6	96.6	105.5	105.0	122.1	109.1	83.0	93.0	134.6	139.0	59.6	49.3	130.7	150.4	173.9	164.0	64.3	128.5	77.5	112.6	112.5	80.0	135.9	84.3	61.2	34.3	66.1	72.4	62.9	83.9

% Chg																															
My Property	-32.6	-6.5	-45.5	-40.0	-37.1	-41.4	-35.1	-54.5	-47.6	-35.7	-2.7	-63.4	-70.0	45.2	87.0	144.4	115.8	-27.8	-21.9	-43.5	45.0	55.0	25.0	50.0	-7.1	-29.4	-45.5	25.0	0.0	-25.0	-7.4
Competitive Set	18.4	-11.0	-19.8	-24.0	-19.1	-29.5	-21.4	-19.5	-24.4	-20.2	71.3	33.3	-1.6	25.7	-5.0	-5.1	-14.8	-14.6	-21.7	-1.8	11.0	30.5	8.4	-29.8	-21.4	-3.0	-4.9	14.8	16.7	5.2	16.4
Index (MPI)	-43.1	5.0	-32.0	-21.1	-22.3	-16.8	-17.5	-43.5	-30.7	-19.4	-43.2	-72.6	-69.5	15.5	96.7	157.5	153.3	-15.5	-0.2	-42.5	30.7	18.8	15.3	113.6	18.1	-27.3	-42.7	8.9	-14.3	-28.7	-20.4

ADR	August																														
	1	2	3	4	5	6	7	8	9	10	11	12	13	14	15	16	17	18	19	20	21	22	23	24	25	26	27	28	29	30	31
My Property	58.27	60.14	61.84	64.72	65.44	60.44	60.75	58.80	58.07	60.08	58.63	59.84	56.43	66.28	65.07	62.72	61.03	60.81	71.24	52.54	46.23	59.26	61.39	62.28	60.09	65.09	54.83	60.08	61.80	58.44	59.79
Competitive Set	79.21	80.16	79.48	90.23	87.55	84.75	81.97	82.82	80.27	79.16	78.41	77.74	77.39	86.06	81.07	82.59	81.78	82.40	81.01	75.11	80.90	74.58	79.30	80.98	76.20	83.85	76.46	77.47	79.92	106.61	81.28
Index (ARI)	73.6	75.0	77.8	71.7	74.8	71.3	74.1	71.0	72.3	75.9	74.8	77.0	72.9	77.0	80.3	75.9	74.6	73.8	87.9	70.0	57.2	79.5	77.4	76.9	78.9	77.6	71.7	77.6	77.3	54.8	73.6

% Chg																															
My Property	-10.8	-8.0	-3.4	-12.3	-12.8	-13.5	-17.3	-14.3	-14.6	-13.2	-14.4	-20.9	-18.0	-12.1	-13.8	-17.5	-16.2	-24.7	-14.2	-24.6	-38.3	-18.9	-16.8	-16.5	-21.4	-11.6	-17.5	-16.2	-18.3	-23.7	-24.3
Competitive Set	-4.8	-6.8	-5.6	12.5	3.2	-0.1	-2.0	-1.7	-3.8	-1.7	-11.5	-15.4	-8.1	4.7	-4.1	0.4	-1.2	2.2	-3.5	-2.9	-1.3	-8.8	-13.9	-12.2	-2.3	-2.8	-3.7	-5.9	-1.8	25.2	-2.6
Index (ARI)	-6.3	-1.4	2.3	-22.1	-15.5	-13.4	-15.7	-12.8	-11.2	-11.7	-3.3	-6.5	-10.8	-16.0	-10.1	-17.8	-15.1	-26.4	-11.1	-22.4	-37.5	-11.1	-3.3	-4.9	-19.5	-9.1	-14.3	-11.0	-16.8	-39.1	-22.3

RevPAR	August																														
	1	2	3	4	5	6	7	8	9	10	11	12	13	14	15	16	17	18	19	20	21	22	23	24	25	26	27	28	29	30	31
My Property	36.13	51.72	29.68	31.06	28.80	20.55	29.16	23.52	25.55	32.44	42.21	17.95	10.16	59.65	55.96	55.20	50.04	15.81	35.62	13.66	26.82	36.74	24.56	29.89	15.62	15.62	6.58	24.03	27.19	24.54	29.90
Competitive Set	44.35	44.88	39.50	41.06	36.70	23.60	36.08	39.92	37.97	31.76	40.61	39.10	28.27	59.26	46.36	41.79	40.89	33.31	31.53	25.19	41.66	41.09	39.65	28.61	23.50	32.89	26.78	46.86	48.57	71.18	48.43
Index (RGI)	81.5	115.2	75.1	75.6	78.5	87.1	80.8	58.9	67.3	102.1	103.9	45.9	35.9	100.7	120.7	132.1	122.4	47.5	113.0	54.2	64.4	89.4	61.9	104.5	66.5	47.5	24.6	51.3	56.0	34.5	61.7

% Chg																															
My Property	-39.9	-14.0	-47.3	-47.4	-45.2	-49.3	-46.4	-61.1	-55.3	-44.2	-16.7	-71.1	-75.4	27.6	61.2	101.7	80.9	-45.6	-33.0	-57.4	-10.5	25.6	4.0	25.3	-27.0	-37.6	-55.0	4.7	-18.3	-42.8	-29.9
Competitive Set	12.6	-17.0	-24.3	-14.5	-16.5	-29.6	-23.0	-20.9	-27.2	-21.6	51.6	12.9	-9.6	31.6	-8.9	-4.7	-15.8	-12.7	-24.4	-4.6	9.5	19.0	-6.7	-38.3	-23.2	-5.6	-8.4	8.0	14.6	31.6	13.4
Index (RGI)	-46.6	3.5	-30.4	-38.5	-34.4	-27.9	-30.4	-50.8	-38.5	-28.9	-45.1	-74.3	-72.8	-3.0	76.9	111.6	115.0	-37.8	-11.3	-55.4	-18.3	5.6	11.4	103.2	-5.0	-33.9	-50.9	-3.0	-28.7	-56.5	-38.2

2023 © CoStar Group. This STR Report is a publication of STR, LLC and STR Global, Ltd., CoStar Group companies, and is intended solely for use by paid subscribers. The information in the STR Report is provided on an "as is" and "as available" basis and should not be construed as investment, tax, accounting or legal advice. Reproduction or distribution of this STR Report, in whole or part, without written permission is prohibited and subject to legal action. If you have received this report and are NOT a subscriber to this STR Report, please contact us immediately. Source: 2023 STR, LLC / STR Global, Ltd. trading as "STR".



How can we assist you?

Glossary:

For all STR definitions, please click here or visit www.str.com/data-insights/resources/glossary

Frequently Asked Questions (FAQ):

For all STR FAQs, please click here or visit www.str.com/data-insights/resources/FAQ

For additional support, please [contact](#) your regional office.

For the latest in industry news, visit HotelNewsNow.com.

To learn more about the Hotel Data Conference, visit HotelDataConference.com.