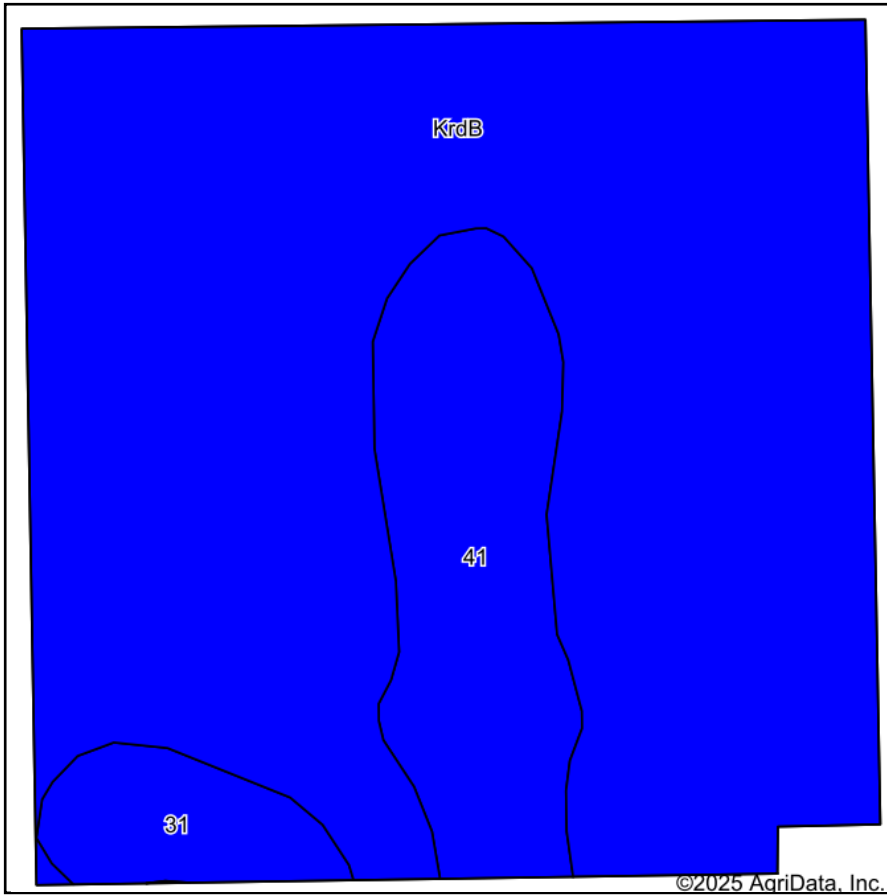
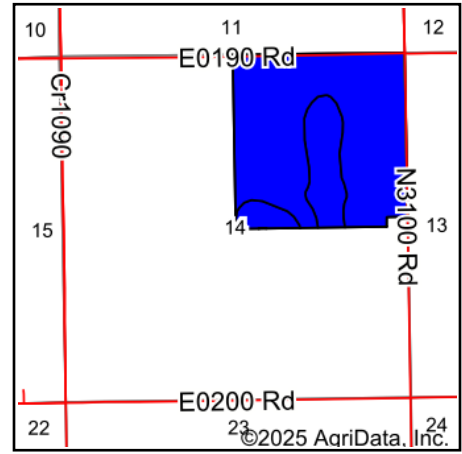


# Soils Map



Soils data provided by USDA and NRCS.



State: **Oklahoma**  
 County: **Grant**  
 Location: **14-26N-3W**  
 Township: **Lamont**  
 Acres: **159.99**  
 Date: **1/6/2025**



Maps Provided By:



© AgriData, Inc. 2023

www.AgriDataInc.com



Area Symbol: OK053, Soil Area Version: 21

Code	Soil Description	Acres	Percent of field	Non-Irr Class Legend	Non-Irr Class *c	Irr Class *c	Range Production (lbs/acre/yr)	Alfalfa hay Tons	Barley Bu	Caucasian bluestem AUM	Cotton lint Lbs	Grain sorghum Bu	Improved bermudagrass AUM	Introduced bluestem AUM	Oats Bu
KrdB	Kirkland silt loam, 1 to 3 percent slopes	129.13	80.7%		Ils	Ils	3926		2		50	34	4	5	3
41	Port silt loam, 0 to 1 percent slopes, occasionally flooded	23.62	14.8%		Ilw	Ilw	5795	5			13	49	9		
31	Kirkland-Pawhuska complex, 0 to 3 percent slopes	7.24	4.5%		Ils	Ils	3673		2	1	51	27	4	4	2
<b>Weighted Average</b>					<b>2.00</b>	<b>2.00</b>	<b>4190.5</b>	<b>0.7</b>	<b>1.7</b>	<b>*-</b>	<b>44.6</b>	<b>35.9</b>	<b>4.7</b>	<b>4.2</b>	<b>26.1</b>

\*n: The aggregation method is "Weighted Average using all components"

\*c: Using Capabilities Class Dominant Condition Aggregation Method

Soils data provided by USDA and NRCS.